

Recombinant Human S100A13 protein

Cat. No. S100A13-3863H **Lot. No.** (See product label)

SPECIFICATION

Product Overview	Recombinant Human S100A13 protein(NP_001019381.1) (Met 1-Lys 98) was expressed in E. coli.
Species	Human
Source	E. coli
ProteinLength	1-98 aa
Form	Lyophilized from sterile 20mM Tris, 100mM NaCl, pH 8.0.
Molecular Mass	The recombinant human S100A13 consisting of 98 amino acids and has a calculated molecular mass of 11.6 kDa. It migrates as an 13 kDa band in SDS-PAGE under reducing conditions.
Purity	> 98 % as determined by SDS-PAGE
Storage	Store it under sterile conditions at -20°C to -80°C upon receiving. Recommend to aliquot the protein into smaller quantities for optimal storage. Avoid repeated freeze-thaw cycles.
Reconstitution	It is recommended that sterile water be added to the vial to prepare a stock solution of 0.2 ug/ul. Centrifuge the vial at 4°C before opening to recover the entire contents.
protein Refseq-	http://www.ncbi.nlm.nih.gov/protein/NP_001019381.1

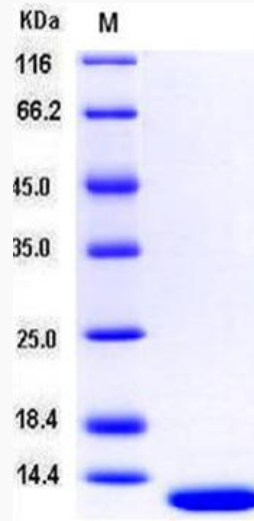
 Tel: 1-631-559-9269 1-516-512-3133

 Email: info@creative-biomart.com  Fax: 1-631-938-8127

 45-1 Ramsey Road, Shirley, NY 11967, USA

Weblink**Unit ID** Q99584**Unit ID-Weblink** <http://www.uniprot.org/uniprot/Q99584>**GENE INFORMATION****Gene Name** S100A13 S100 calcium binding protein A13 [Homo sapiens]**Official Symbol** S100A13**Synonyms** S100A13; S100 calcium binding protein A13; protein S100-A13; S100 calcium-binding protein A13;**Gene ID** 6284**mRNA Refseq** NM_001024210**protein Refseq** NP_001019381**MIM** 601989 Tel: 1-631-559-9269 1-516-512-3133 Email: info@creative-biomart.com  Fax: 1-631-938-8127 45-1 Ramsey Road, Shirley, NY 11967, USA

SDS-PAGE



 Tel: 1-631-559-9269 1-516-512-3133

 Email: info@creative-biomart.com  Fax: 1-631-938-8127

 45-1 Ramsey Road, Shirley, NY 11967, USA