

Recombinant Human S100A13 Protein, Myc/DDK-tagged, C13 and N15-labeled

Cat. No. S100A13-5377H **Lot. No.** (See product label)

SPECIFICATION

Product Overview

S100A13 MS Standard C13 and N15-labeled recombinant protein (NP_001019384) with a C-terminal MYC/DDK tag, was expressed in HEK293 cells.

Species

Human

Source

HEK293

Description

The protein encoded by this gene is a member of the S100 family of proteins containing 2 EF-hand calcium-binding motifs. S100 proteins are localized in the cytoplasm and/or nucleus of a wide range of cells, and involved in the regulation of a number of cellular processes such as cell cycle progression and differentiation. S100 genes include at least 13 members which are located as a cluster on chromosome 1q21. This protein is widely expressed in various types of tissues with a high expression level in thyroid gland. In smooth muscle cells, this protein co-expresses with other family members in the nucleus and in stress fibers, suggesting diverse functions in signal transduction. Multiple alternatively spliced transcript variants encoding the same protein have been found for this gene.

Molecular Mass

11.5 kDa

AA Sequence

MAAEPLTELESJETVVTFFTFARQEGRKDSLVSNEFKELVTQQLPHLLKDVGSLDE
KMKSLDVNQDSELKFNEYWRLIGELAKEIRKKKDLKIRKKTRTRPLEQKLISEEDLAA
NDILDYKDDDDKV

 Tel: 1-631-559-9269 1-516-512-3133

 Email: info@creative-biomart.com  Fax: 1-631-938-8127

 45-1 Ramsey Road, Shirley, NY 11967, USA



Purity	> 80% as determined by SDS-PAGE and Coomassie blue staining
Stability	Stable for 3 months from receipt of products under proper storage and handling conditions.
Storage	Store at -80 centigrade. Avoid repeated freeze-thaw cycles.
Concentration	50 µg/mL as determined by BCA
Storage Buffer	100 mM glycine, 25 mM Tris-HCl, pH 7.3.

GENE INFORMATION

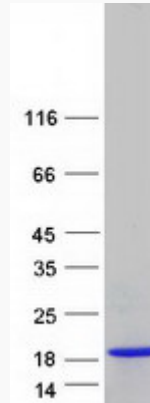
Gene Name	S100A13 S100 calcium binding protein A13 [Homo sapiens (human)]
Official Symbol	S100A13
Synonyms	S100A13; S100 calcium binding protein A13; protein S100-A13; S100 calcium-binding protein A13;
Gene ID	6284
mRNA Refseq	NM_001024213
Protein Refseq	NP_001019384
MIM	601989
UniProt ID	Q99584

Tel: 1-631-559-9269 1-516-512-3133

Email: info@creative-biomart.com Fax: 1-631-938-8127

45-1 Ramsey Road, Shirley, NY 11967, USA

SDS-PAGE



 Tel: 1-631-559-9269 1-516-512-3133

 Email: info@creative-biomart.com  Fax: 1-631-938-8127

 45-1 Ramsey Road, Shirley, NY 11967, USA