

Recombinant Human S100A13 protein

Cat. No. S100A13-563H **Lot. No.** (See product label)

SPECIFICATION

Product Overview	Recombinant Human S100A13 (Met1-Lys98) protein carried no tag and was expressed in E.coli.
Species	Human
Source	E.coli
ProteinLength	Met1-Lys98
Description	<p>S100 calcium-binding protein A13 (S100A13) is a member of the S-100 family. S100 protein is a family of low molecular weight protein found in vertebrates characterized by two EF-hand calcium-binding motifs. There are at least 21 different S100 proteins, and the name is derived from the fact that the protein is 100% soluble in ammonium sulfate at neutral pH. Most S100 proteins are disulfide-linked homodimer, and is normally present in cells derived from the neural crest, chondrocytes, macrophages, dendritic cells, etc. S100A13 plays a role in the export of proteins that lack a signal peptide and are secreted by an alternative pathway. S100A13 is required for the copper-dependent stress-induced export of IL1A and FGF1. The calcium-free protein binds to lipid vesicles containing phosphatidylserine, but not to vesicles containing phosphatidylcholine.</p>
Predicted N Terminal	Met1
Form	Lyophilized from 0.22 µm filtered solution in 50 mM Tris, 150 mM NaCl, pH 8.0, 10% trehalose.

 Tel: 1-631-559-9269 1-516-512-3133

 Email: info@creative-biomart.com  Fax: 1-631-938-8127

 45-1 Ramsey Road, Shirley, NY 11967, USA

Molecular Mass	The protein has a calculated MW of 11.5 kDa. The protein migrates as 13 kDa under reducing (R) condition (SDS-PAGE).
Endotoxin	Less than 1.0 EU per µg by the LAL method.
Purity	>95% as determined by SDS-PAGE.
Storage	<p>For long term storage, the product should be stored at lyophilized state at -20 centigrade or lower.</p> <p>Please avoid repeated freeze-thaw cycles.</p> <p>This product is stable after storage at:</p> <ul style="list-style-type: none"> -20 to -70 centigrade for 12 months in lyophilized state; -70 centigrade for 3 months under sterile conditions after reconstitution.
Reconstitution	It is recommended that sterile water be added to the vial to prepare a stock solution of 0.2 ug/ul. Centrifuge the vial at 4°C before opening to recover the entire contents.

GENE INFORMATION

Gene Name	S100A13
Official Symbol	S100A13
Synonyms	S100A13; S100 calcium binding protein A13; protein S100-A13; S100 calcium-binding protein A13
Gene ID	6284
mRNA Refseq	NM_001024210
Protein Refseq	NP_001019381

 Tel: 1-631-559-9269 1-516-512-3133

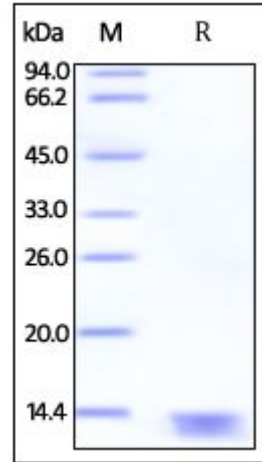
 Email: info@creative-biomart.com  Fax: 1-631-938-8127

 45-1 Ramsey Road, Shirley, NY 11967, USA

MIM 601989

UniProt ID Q99584

**SDS-PAGE of
S100A13-563H**



Human S100A13, Tag Free on SDS-PAGE under reducing (R) condition. The gel was stained overnight with Coomassie Blue. The purity of the protein is greater than 95%.

Tel: 1-631-559-9269 1-516-512-3133

Email: info@creative-biomart.com Fax: 1-631-938-8127

45-1 Ramsey Road, Shirley, NY 11967, USA