

Recombinant Cattle S100A2 protein, His & GST-tagged

Cat. No. S100A2-2100C Lot. No. (See product label)

SPECIFICATION

Product Overview	Recombinant Cattle S100A2 aa. (Met1~Ser97 (Accession # P10462)) fused with N-terminal His & GST tag was produced in E. coli cells.
Species	Cattle
Source	E.coli
ProteinLength	Met1~Ser97
Form	Freeze-dried powder
Molecular Mass	Predicted Molecular Mass: 43.3kDa
Endotoxin	<1.0EU per 1ug (determined by the LAL method)
Purity	>95%
Characteristic	The isoelectric point is 5.8.
Applications	SDS-PAGE; WB; ELISA; IP.
Stability	The thermal stability is described by the loss rate of the target protein. The loss rate was determined by accelerated thermal degradation test, that is, incubate the protein at 37°C for 48h, and no obvious degradation and precipitation were observed. (Referring from China Biological Products Standard, which was calculated by the

 Tel: 1-631-559-9269 1-516-512-3133

 Email: info@creative-biomart.com  Fax: 1-631-938-8127

 45-1 Ramsey Road, Shirley, NY 11967, USA

Arrhenius equation.) The loss of this protein is less than 5% within the expiration date under appropriate storage condition.

Storage

Avoid repeated freeze/thaw cycles. Store at 2-8°C for one month. Aliquot and store at -80°C for 12 months.

Storage Buffer

Supplied as lyophilized form in PBS, pH7.4, containing 5% trehalose, 0.01% sarcosyl.

Reconstitution

Reconstitute in sterile PBS, pH7.2-pH7.4.

GENE INFORMATION

Gene Name

S100A2 S100 calcium binding protein A2 [*Bos taurus* (cattle)]

Official Symbol

S100A2

Synonyms

APOO; apolipoprotein O; MIC26; Mic23; My025; FAM121B; MICOS complex subunit MIC26; MICOS complex subunit MIC23; brain my025; family with sequence similarity 121B

Gene ID

509860

mRNA Refseq

NM_001034367.2

Protein Refseq

NP_001029539.1

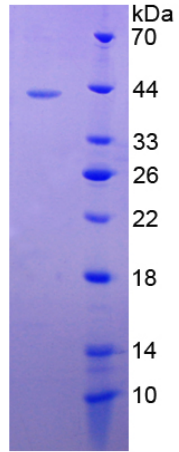
UniProt ID

P10462

 Tel: 1-631-559-9269 1-516-512-3133

 Email: info@creative-biomart.com  Fax: 1-631-938-8127

 45-1 Ramsey Road, Shirley, NY 11967, USA



15% SDS-PAGE

SDS-PAGE

Tel: 1-631-559-9269 1-516-512-3133

Email: info@creative-biomart.com Fax: 1-631-938-8127

45-1 Ramsey Road, Shirley, NY 11967, USA