

Recombinant Human S100A2 protein, His & GST-tagged

Cat. No. S100A2-2101H Lot. No. (See product label)

SPECIFICATION

Product Overview	Recombinant Human S100A2 aa. (Met2~Pro98 (Accession # P29034)) fused with N-terminal His & GST tag was produced in E. coli cells.
Species	Human
Source	E.coli
ProteinLength	Met2~Pro98
Form	Freeze-dried powder
Molecular Mass	Predicted Molecular Mass: 43.4kDa
Endotoxin	<1.0EU per 1ug (determined by the LAL method)
Purity	>95%
Characteristic	The isoelectric point is 5.8.
Applications	SDS-PAGE; WB; ELISA; IP.
Stability	The thermal stability is described by the loss rate of the target protein. The loss rate was determined by accelerated thermal degradation test, that is, incubate the protein at 37°C for 48h, and no obvious degradation and precipitation were observed. (Referring from China Biological Products Standard, which was calculated by the

 Tel: 1-631-559-9269 1-516-512-3133

 Email: info@creative-biomart.com  Fax: 1-631-938-8127

 45-1 Ramsey Road, Shirley, NY 11967, USA

Arrhenius equation.) The loss of this protein is less than 5% within the expiration date under appropriate storage condition.

Storage

Avoid repeated freeze/thaw cycles. Store at 2-8°C for one month. Aliquot and store at -80°C for 12 months.

Storage Buffer

Supplied as lyophilized form in PBS, pH7.4, containing 5% trehalose, 0.01% sarcosyl.

Reconstitution

Reconstitute in sterile PBS, pH7.2-pH7.4.

GENE INFORMATION

Gene Name

S100A2 S100 calcium binding protein A2 [Homo sapiens (human)]

Official Symbol

S100A2

Synonyms

PDP2; pyruvate dehydrogenase phosphatase catalytic subunit 2; PPM2B; PDPC 2; PPM2C2; [Pyruvate dehydrogenase [acetyl-transferring]]-phosphatase 2, mitochondrial; pyruvate dehydrogenase [acetyl-transferring]-phosphatase 2, mitochondrial; protein phosphatase 2C, magnesium-dependent, catalytic subunit 2; protein phosphatase, Mg²⁺/Mn²⁺ dependent 2B; pyruvate dehydrogenase phosphatase isoenzyme 2

Gene ID

6273

mRNA Refseq

NM_005978.3

Protein Refseq

NP_005969.1

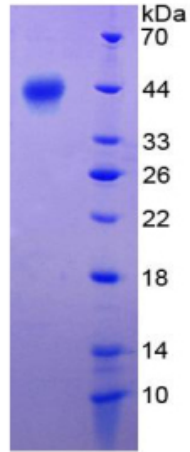
UniProt ID

P29034

 Tel: 1-631-559-9269 1-516-512-3133

 Email: info@creative-biomart.com  Fax: 1-631-938-8127

 45-1 Ramsey Road, Shirley, NY 11967, USA



15% SDS-PAGE

SDS-PAGE

Tel: 1-631-559-9269 1-516-512-3133

Email: info@creative-biomart.com Fax: 1-631-938-8127

45-1 Ramsey Road, Shirley, NY 11967, USA