

## Recombinant Human S100A2 protein, hFc-tagged

Cat. No. S100A2-842H Lot. No. (See product label)

### SPECIFICATION

<b>Product Overview</b>	Recombinant Human S100A2 protein(NP_005969.1)(Met 2-Pro98) was expressed in HEK293 with the fused Fc region of human IgG1 at the N-terminus.
<b>Species</b>	Human
<b>Source</b>	HEK293
<b>ProteinLength</b>	2-98 aa
<b>Form</b>	Lyophilized from sterile 100mM Glycine, 10mM NaCl, 50mM Tris, pH 7.5.
<b>Molecular Mass</b>	The recombinant human Fc/S100A2 is a disulfide-linked homodimer. The reduced monomer consists of 334 amino acids and has a predicted molecular mass of 37.6 kDa. As a result of glycosylation, the apparent molecular mass of rh Fc/S100A2 monomer is approximately 40 kDa in SDS-PAGE under reducing conditions.
<b>Endotoxin</b>	< 1.0 EU per µg of the protein as determined by the LAL method.
<b>Purity</b>	> 95 % as determined by SDS-PAGE
<b>Storage</b>	Store it under sterile conditions at -20°C to -80°C upon receiving. Recommend to aliquot the protein into smaller quantities for optimal storage. Avoid repeated freeze-thaw cycles.
<b>Reconstitution</b>	It is recommended that sterile water be added to the vial to prepare a stock solution of

 Tel: 1-631-559-9269 1-516-512-3133

 Email: [info@creative-biomart.com](mailto:info@creative-biomart.com)  Fax: 1-631-938-8127

 45-1 Ramsey Road, Shirley, NY 11967, USA

0.2 ug/ul. Centrifuge the vial at 4°C before opening to recover the entire contents.

## GENE INFORMATION

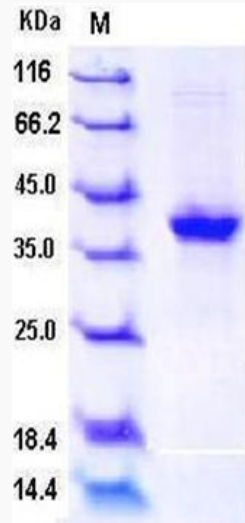
<b>Gene Name</b>	S100A2 S100 calcium binding protein A2 [ Homo sapiens ]
<b>Official Symbol</b>	S100A2
<b>Synonyms</b>	S100A2; S100 calcium binding protein A2; S100 calcium binding protein A2 , S100L; protein S100-A2; CAN19; S100 calcium-binding protein A2; S100L; MGC111539;
<b>Gene ID</b>	6273
<b>mRNA Refseq</b>	NM_005978
<b>Protein Refseq</b>	NP_005969
<b>MIM</b>	176993
<b>UniProt ID</b>	P29034

 Tel: 1-631-559-9269 1-516-512-3133

 Email: [info@creative-biomart.com](mailto:info@creative-biomart.com)  Fax: 1-631-938-8127

 45-1 Ramsey Road, Shirley, NY 11967, USA

**SDS-PAGE**



 Tel: 1-631-559-9269 1-516-512-3133

 Email: [info@creative-biomart.com](mailto:info@creative-biomart.com)  Fax: 1-631-938-8127

 45-1 Ramsey Road, Shirley, NY 11967, USA