

Recombinant Human S100A3 Protein, Myc/DDK-tagged, C13 and N15-labeled

Cat. No. S100A3-3279H **Lot. No.** (See product label)

SPECIFICATION

Product Overview	S100A3 MS Standard C13 and N15-labeled recombinant protein (NP_002951) with a C-terminal MYC/DDK tag, was expressed in HEK293 cells.
Species	Human
Source	HEK293
Description	The protein encoded by this gene is a member of the S100 family of proteins containing 2 EF-hand calcium-binding motifs. S100 proteins are localized in the cytoplasm and/or nucleus of a wide range of cells, and involved in the regulation of a number of cellular processes such as cell cycle progression and differentiation. S100 genes include at least 13 members which are located as a cluster on chromosome 1q21. This protein has the highest content of cysteines of all S100 proteins, has a high affinity for Zinc, and is highly expressed in human hair cuticle. The precise function of this protein is unknown.
Molecular Mass	11.7 kDa
AA Sequence	MARPLEQAVAAIVCTFQEYAGRCGDKYKLCQAEKELLQKELATWTPTEFRECDYN KFMSVLDTNKDCEVDFVEYVRSACLCLYCHEYFKDCPSEPPCSQTRTRPLEQKLIS EEDLAANDILDYKDDDDKV
Purity	> 80% as determined by SDS-PAGE and Coomassie blue staining

 Tel: 1-631-559-9269 1-516-512-3133

 Email: info@creative-biomart.com  Fax: 1-631-938-8127

 45-1 Ramsey Road, Shirley, NY 11967, USA

Stability	Stable for 3 months from receipt of products under proper storage and handling conditions.
Storage	Store at -80 centigrade. Avoid repeated freeze-thaw cycles.
Concentration	50 µg/mL as determined by BCA
Storage Buffer	100 mM glycine, 25 mM Tris-HCl, pH 7.3.
GENE INFORMATION	
Gene Name	S100A3 S100 calcium binding protein A3 [Homo sapiens (human)]
Official Symbol	S100A3
Synonyms	S100A3; S100 calcium binding protein A3; S100 calcium binding protein A3, S100E; protein S100-A3; S100 calcium-binding protein A3; S100E;
Gene ID	6274
mRNA Refseq	NM_002960
Protein Refseq	NP_002951
MIM	176992
UniProt ID	P33764

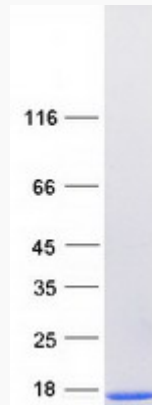
 Tel: 1-631-559-9269 1-516-512-3133

 Email: info@creative-biomart.com  Fax: 1-631-938-8127

 45-1 Ramsey Road, Shirley, NY 11967, USA



SDS-PAGE



Tel: 1-631-559-9269 1-516-512-3133

Email: info@creative-biomart.com Fax: 1-631-938-8127

45-1 Ramsey Road, Shirley, NY 11967, USA