

Recombinant Full Length Human S100A4 Protein, C-Flag-tagged

Cat. No. S100A4-1051HFL **Lot. No.** (See product label)

SPECIFICATION

Product Overview	Recombinant Full Length Human S100A4 Protein, fused to Flag-tag at C-terminus, was expressed in Mammalian cells.
Species	Human
Source	Mammalian Cells
Description	The protein encoded by this gene is a member of the S100 family of proteins containing 2 EF-hand calcium-binding motifs. S100 proteins are localized in the cytoplasm and/or nucleus of a wide range of cells, and involved in the regulation of a number of cellular processes such as cell cycle progression and differentiation. S100 genes include at least 13 members which are located as a cluster on chromosome 1q21. This protein may function in motility, invasion, and tubulin polymerization. Chromosomal rearrangements and altered expression of this gene have been implicated in tumor metastasis. Multiple alternatively spliced variants, encoding the same protein, have been identified.
Form	25 mM Tris HCl, pH 7.3, 100 mM glycine, 10% glycerol.
Molecular Mass	11.5 kDa
AA Sequence	MACPLEKALDVMVSTFHKYSGKEGDKFKLNKSELKELLTRELPSFLGKRTDEAAFQK LMSNLDSNRDNEVDFQEYCVFLSCIAMMCNEFFEGFPDKQPRKKTRTRPLEQKLIS EEDLAANDILDYKDDDDKV

 Tel: 1-631-559-9269 1-516-512-3133

 Email: info@creative-biomart.com  Fax: 1-631-938-8127

 45-1 Ramsey Road, Shirley, NY 11967, USA



Purity	> 80% as determined by SDS-PAGE and Coomassie blue staining.
Stability	Stable for 12 months from the date of receipt of the product under proper storage and handling conditions. Avoid repeated freeze-thaw cycles.
Storage	Store at -80 centigrade.
Concentration	>50 ug/mL as determined by microplate BCA method.
Preparation	Recombinant protein was captured through anti-DDK affinity column followed by conventional chromatography steps.
Full Length	Full L.

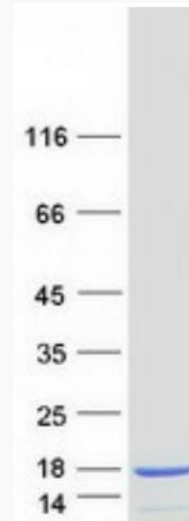
GENE INFORMATION

Gene Name	S100A4 S100 calcium binding protein A4 [Homo sapiens (human)]
Official Symbol	S100A4
Synonyms	42A; 18A2; CAPL; FSP1; MTS1; P9KA; PEL98
Gene ID	6275
mRNA Refseq	NM_019554.3
Protein Refseq	NP_062427.1
MIM	114210
UniProt ID	P26447

Tel: 1-631-559-9269 1-516-512-3133

Email: info@creative-biomart.com Fax: 1-631-938-8127

45-1 Ramsey Road, Shirley, NY 11967, USA



Coomassie blue staining of purified S100A4 protein.

 Tel: 1-631-559-9269 1-516-512-3133

 Email: info@creative-biomart.com  Fax: 1-631-938-8127

 45-1 Ramsey Road, Shirley, NY 11967, USA