

Recombinant Human S100A4 protein, His-tagged

Cat. No. S100A4-1455H Lot. No. (See product label)

SPECIFICATION

Product Overview	Recombinant Human S100A4 protein(P26447)(116aa), fused with N-terminal His tag, was expressed in E. coli.
Species	Human
Source	E.coli
Protein Length	116aa(including fusion tag)
Tag	N-His
Form	20mM Tris.Cl, 50mM NaCl, 50% Glycerol, pH8.0.
Molecular Mass	13.6kDa(including fusion tag)
Storage	Store at -80°C and avoid repeated freeze-thaw cycles.
Reconstitution	It is recommended that sterile water be added to the vial to prepare a stock solution of 0.2 ug/ul. Centrifuge the vial at 4°C before opening to recover the entire contents.

GENE INFORMATION

Gene Name	S100A4 S100 calcium binding protein A4 [Homo sapiens]
Official Symbol	S100A4

 Tel: 1-631-559-9269 1-516-512-3133

 Email: info@creative-biomart.com  Fax: 1-631-938-8127

 45-1 Ramsey Road, Shirley, NY 11967, USA

Synonyms S100A4; S100 calcium binding protein A4; CAPL, MTS1, S100 calcium binding protein A4 (calcium protein, calvasculin, metastasin, murine placental homolog) , S100 calcium binding protein A4 (calcium protein, calvasculin, metastasin, murine placental homolog); protein S100-A4; 18A2; 42A; fibroblast specific protein 1; FSP1; P9KA; PEL98; protein Mts1; fibroblast-specific protein-1; placental calcium-binding protein; malignant transformation suppression 1; leukemia multidrug resistance associated protein; S100 calcium-binding protein A4 (calcium protein, calvasculin, metastasin, murine placental homolog); CAPL; MTS1;

Gene ID 6275

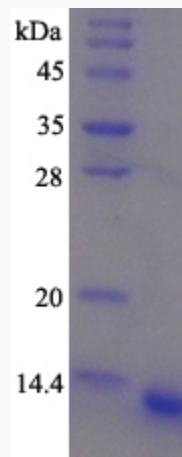
mRNA Refseq NM_002961

Protein Refseq NP_002952

MIM 114210

UniProt ID P26447

SDS-PAGE



 Tel: 1-631-559-9269 1-516-512-3133

 Email: info@creative-biomart.com  Fax: 1-631-938-8127

 45-1 Ramsey Road, Shirley, NY 11967, USA