

Recombinant Human S100A4 protein, His-tagged

Cat. No. S100A4-195H Lot. No. (See product label)

SPECIFICATION

Product Overview	Recombinant Human S100A4 protein(NP_002952.1) (Met1-Lys101) was expressed in E.coli with a polyhistide tag at the C-terminus.
Species	Human
Source	E.coli
ProteinLength	1-101 aa
Form	Lyophilized from sterile PBS, pH 7.4.
Molecular Mass	The recombinant human S100A4 consists of 107 amino acids and predicts a molecular mass of 12.6 KDa. It migrates as an approximately 13 KDa band in SDS-PAGE under reducing conditions.
Purity	> 95 % as determined by SDS-PAGE
Storage	Store it under sterile conditions at -20°C to -80°C upon receiving. Recommend to aliquot the protein into smaller quantities for optimal storage. Avoid repeated freeze-thaw cycles.
Reconstitution	It is recommended that sterile water be added to the vial to prepare a stock solution of 0.2 ug/ul. Centrifuge the vial at 4°C before opening to recover the entire contents.

GENE INFORMATION

 Tel: 1-631-559-9269 1-516-512-3133

 Email: info@creative-biomart.com  Fax: 1-631-938-8127

 45-1 Ramsey Road, Shirley, NY 11967, USA



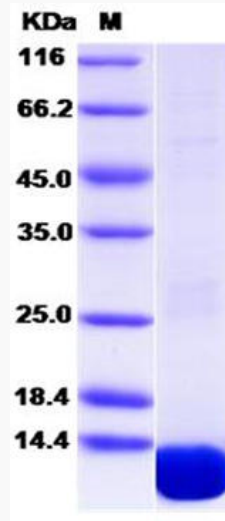
Gene Name	S100A4 S100 calcium binding protein A4 [Homo sapiens]
Official Symbol	S100A4
Synonyms	S100A4; S100 calcium binding protein A4; CAPL, MTS1, S100 calcium binding protein A4 (calcium protein, calvasculin, metastasin, murine placental homolog) , S100 calcium binding protein A4 (calcium protein, calvasculin, metastasin, murine placental homolog); protein S100-A4; 18A2; 42A; fibroblast specific protein 1; FSP1; P9KA; PEL98; protein Mts1; fibroblast-specific protein-1; placental calcium-binding protein; malignant transformation suppression 1; leukemia multidrug resistance associated protein; S100 calcium-binding protein A4 (calcium protein, calvasculin, metastasin, murine placental homolog); CAPL; MTS1;
Gene ID	6275
mRNA Refseq	NM_002961
Protein Refseq	NP_002952
MIM	114210
UniProt ID	P26447

Tel: 1-631-559-9269 1-516-512-3133

Email: info@creative-biomart.com Fax: 1-631-938-8127

45-1 Ramsey Road, Shirley, NY 11967, USA

SDS-PAGE



 Tel: 1-631-559-9269 1-516-512-3133

 Email: info@creative-biomart.com  Fax: 1-631-938-8127

 45-1 Ramsey Road, Shirley, NY 11967, USA