

Recombinant Human S100 Calcium Binding Protein A4

Cat. No. S100A4-201H Lot. No. (See product label)

SPECIFICATION

Product Overview	Recombinant Human S100A4 produced in <i>E.Coli</i> encodes full length amino acids.
Species	Human
Source	E.coli
Description	S100 belongs to the family of calcium binding proteins such as calmodulin and troponin C. S100A is composed of an alpha and beta chain, whereas S100B is composed of two beta chains. S100 protein is also expressed in the antigen presenting cells such as the Langerhans cells in skin and interdigitating reticulum cells in the paracortex of lymph nodes.
Formulation	10g/100µ purified human S100A4 protein at 0.1mg/ml in 50mM Tris-Acetate, pH7.5, 1mM EDTA, 20% Glycerol without BSA and Sodium Azide.
Application And Suggested Dilutions	•ELISA •Inhibition Assays •Western Blotting.
Characterization	S100A4 antibody reactive.
Activity	Not known.
Storage & Stability	Store vial at -20°C to -80°C. When stored at the recommended temperature, this protein is stable for 12 months.

 Tel: 1-631-559-9269 1-516-512-3133

 Email: info@creative-biomart.com  Fax: 1-631-938-8127

 45-1 Ramsey Road, Shirley, NY 11967, USA

Full Length

Full L.

GENE INFORMATION

Gene Name
[S100A4 S100 calcium binding protein A4 \[Homo sapiens \]](#)
Synonyms

S100A4; S100 calcium binding protein A4; 42A; 18A2; CAPL; FSP1; MTS1; P9KA; PEL98; S100 calcium-binding protein A4; OTTHUMP00000015469; OTTHUMP00000032895; fibroblast-specific protein-1; malignant transformation suppression 1; leukemia multidrug resistance associated protein; S100 calcium binding protein A4 (calcium protein, calvasculin, metastasin, murine placental homolog); S100 calcium-binding protein A4 (calcium protein, calvasculin, metastasin, murine placental homolog); Protein S100-A4; Metastasin; Protein Mts1; Placental calcium-binding protein; Calvasculin; OTTHUMP00000015467; OTTHUMP00000015468; fibroblast-specific protein-1; malignant transformation suppression 1

Gene ID
[6275](#)
mRNA Refseq
[NM_002961](#)
Protein Refseq
[NP_002952](#)
MIM
[114210](#)
UniProt ID
[P26447](#)
**Chromosome
Location**

1q12-q22

Function

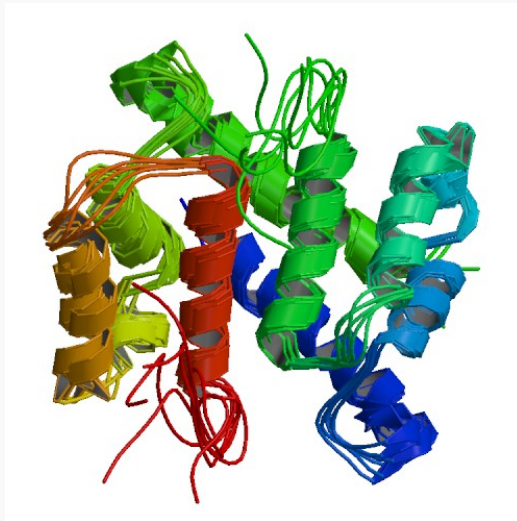
calcium ion binding; calcium-dependent protein binding; identical protein binding

 Tel: 1-631-559-9269 1-516-512-3133

 Email: info@creative-biomart.com
 Fax: 1-631-938-8127

 45-1 Ramsey Road, Shirley, NY 11967, USA

PDB rendering based
on 1m31.



 Tel: 1-631-559-9269 1-516-512-3133

 Email: info@creative-biomart.com  Fax: 1-631-938-8127

 45-1 Ramsey Road, Shirley, NY 11967, USA