

Recombinant Rat S100A4 Protein (2-101 aa), His-Myc-tagged

Cat. No. S100A4-2599R Lot. No. (See product label)

SPECIFICATION

Product Overview	Recombinant Rat S100A4 Protein (2-101 aa) is produced by E. coli expression system. This protein is fused with a 10xHis tag at the N-terminal and a Myc tag at the C-terminal. Research Area: Cardiovascular. Protein Description: Full Length of Mature Protein.
Species	Rat
Source	E.coli
ProteinLength	2-101 aa
Form	Tris-based buffer,50% glycerol
Molecular Mass	18.6 kDa
AA Sequence	ARPLEEALDVIVSTFHKYSGNEGDKFKLNKTELKELLTRELPSFLGRRRTDEAAFQKLM NNLDSNRDNEVDFQEYCVFLSCIAMMCNEFFEGCPDKEPRKK
Purity	> 85% as determined by SDS-PAGE.
Notes	Repeated freezing and thawing is not recommended. Store working aliquots at 4 centigrade for up to one week.
Storage	The shelf life is related to many factors, storage state, buffer ingredients, storage temperature and the stability of the protein itself. Generally, the shelf life of liquid form

 Tel: 1-631-559-9269 1-516-512-3133

 Email: info@creative-biomart.com  Fax: 1-631-938-8127

 45-1 Ramsey Road, Shirley, NY 11967, USA

is 6 months at -20 centigrade/-80 centigrade. The shelf life of lyophilized form is 12 months at -20 centigrade/-80 centigrade.

Concentration

A hardcopy of COA will be sent along with the products. Please refer to it for detailed information.

GENE INFORMATION**Gene Name**

S100a4 S100 calcium-binding protein A4 [Rattus norvegicus]

Official Symbol

S100A4

Synonyms

S100A4; protein S100-A4; P9K; metastasin; calvasculin; 42A; 18A2; CAPL; MTS1; P9ka; PEL98; RNP9KA;

Gene ID

24615

mRNA Refseq

NM_012618

Protein Refseq


NP_036750

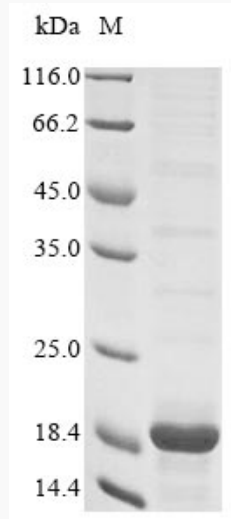
UniProt ID

P05942


 Tel: 1-631-559-9269 1-516-512-3133

 Email: info@creative-biomart.com  Fax: 1-631-938-8127


 45-1 Ramsey Road, Shirley, NY 11967, USA



(Tris-Glycine gel) Discontinuous SDS-PAGE (reduced) with 5% enrichment gel and 15% separation gel.

 Tel: 1-631-559-9269 1-516-512-3133

 Email: info@creative-biomart.com  Fax: 1-631-938-8127

 45-1 Ramsey Road, Shirley, NY 11967, USA