

# Recombinant Human S100A4 Protein, Myc/DDK-tagged, C13 and N15-labeled

**Cat. No.** S100A4-4590H    **Lot. No.** (See product label)

## SPECIFICATION

<b>Product Overview</b>	S100A4 MS Standard C13 and N15-labeled recombinant protein (NP_062427) with a C-terminal MYC/DDK tag, was expressed in HEK293 cells.
<b>Species</b>	Human
<b>Source</b>	HEK293
<b>Description</b>	<p>The protein encoded by this gene is a member of the S100 family of proteins containing 2 EF-hand calcium-binding motifs. S100 proteins are localized in the cytoplasm and/or nucleus of a wide range of cells, and involved in the regulation of a number of cellular processes such as cell cycle progression and differentiation. S100 genes include at least 13 members which are located as a cluster on chromosome 1q21. This protein may function in motility, invasion, and tubulin polymerization. Chromosomal rearrangements and altered expression of this gene have been implicated in tumor metastasis. Multiple alternatively spliced variants, encoding the same protein, have been identified.</p>
<b>Molecular Mass</b>	11.7 kDa
<b>AA Sequence</b>	<p>MACPLEKALDVMVSTFHKYSGKEGDKFKLNKSELKELLTRELPSFLGKRTDEAAFQK  LMSNLDSNRDNEVDFQEYCVFLSCIAMMCNEFFEGFPDKQPRKKTRTRPLEQKLIS  EEDLAANDILDYKDDDDKV</p>
<b>Purity</b>	> 80% as determined by SDS-PAGE and Coomassie blue staining

 Tel: 1-631-559-9269    1-516-512-3133

 Email: [info@creative-biomart.com](mailto:info@creative-biomart.com)     Fax: 1-631-938-8127

 45-1 Ramsey Road, Shirley, NY 11967, USA

<b>Stability</b>	Stable for 3 months from receipt of products under proper storage and handling conditions.
<b>Storage</b>	Store at -80 centigrade. Avoid repeated freeze-thaw cycles.
<b>Concentration</b>	50 µg/mL as determined by BCA
<b>Storage Buffer</b>	100 mM glycine, 25 mM Tris-HCl, pH 7.3.

## GENE INFORMATION

<b>Gene Name</b>	<a href="#">S100A4</a> <a href="#">S100 calcium binding protein A4 [ Homo sapiens (human) ]</a>
<b>Official Symbol</b>	<a href="#">S100A4</a>
<b>Synonyms</b>	S100A4; S100 calcium binding protein A4; CAPL, MTS1, S100 calcium binding protein A4 (calcium protein, calvasculin, metastasin, murine placental homolog), S100 calcium binding protein A4 (calcium protein, calvasculin, metastasin, murine placental homolog); protein S100-A4; 18A2; 42A; fibroblast specific protein 1; FSP1; P9KA; PEL98; protein Mts1; fibroblast-specific protein-1; placental calcium-binding protein; malignant transformation suppression 1; leukemia multidrug resistance associated protein; S100 calcium-binding protein A4 (calcium protein, calvasculin, metastasin, murine placental homolog); CAPL; MTS1;
<b>Gene ID</b>	<a href="#">6275</a>
<b>mRNA Refseq</b>	<a href="#">NM_019554</a>
<b>Protein Refseq</b>	<a href="#">NP_062427</a>
<b>MIM</b>	<a href="#">114210</a>

 Tel: 1-631-559-9269 1-516-512-3133

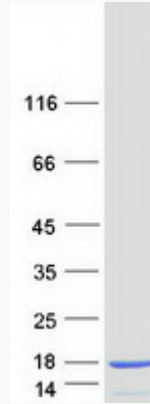
 Email: [info@creative-biomart.com](mailto:info@creative-biomart.com)  Fax: 1-631-938-8127


 45-1 Ramsey Road, Shirley, NY 11967, USA

UniProt ID


P26447

SDS-PAGE



 Tel: 1-631-559-9269 1-516-512-3133

 Email: [info@creative-biomart.com](mailto:info@creative-biomart.com)  Fax: 1-631-938-8127

 45-1 Ramsey Road, Shirley, NY 11967, USA