

Recombinant Human S100A4 protein, hFc-tagged

Cat. No. S100A4-70H Lot. No. (See product label)

SPECIFICATION

Product Overview Recombinant Human S100A4 protein(NP_002952.1) (Met 1-Lys 101) was expressed with the fused Fc region of human IgG1 at the N-terminus.

Species Human

Source HEK293

ProteinLength 1-101 aa

Form Lyophilized from sterile PBS, pH 7.4.

Molecular Mass The recombinant human Fc/S100A4 is a disulfide-linked homodimeric protein. The reduced monomer consists of 338 amino acids and has a predicted molecular mass of 38.4 kDa. As a result of glycosylation, the apparent molecular mass of rhFc/S100A4 monomer is approximately 40 kDa in SDS-PAGE under reducing conditions.

Endotoxin < 1.0 EU per µg of the protein as determined by the LAL method.

Purity > 95 % as determined by SDS-PAGE

Storage Store it under sterile conditions at -20°C to -80°C upon receiving. Recommend to aliquot the protein into smaller quantities for optimal storage. Avoid repeated freeze-thaw cycles.

 Tel: 1-631-559-9269 1-516-512-3133

 Email: info@creative-biomart.com  Fax: 1-631-938-8127

 45-1 Ramsey Road, Shirley, NY 11967, USA

Reconstitution It is recommended that sterile water be added to the vial to prepare a stock solution of 0.2 ug/ul. Centrifuge the vial at 4°C before opening to recover the entire contents.

GENE INFORMATION

Gene Name [S100A4 S100 calcium binding protein A4 \[Homo sapiens \]](#)

Official Symbol [S100A4](#)

Synonyms

S100A4; S100 calcium binding protein A4; CAPL, MTS1, S100 calcium binding protein A4 (calcium protein, calvasculin, metastasin, murine placental homolog) , S100 calcium binding protein A4 (calcium protein, calvasculin, metastasin, murine placental homolog); protein S100-A4; 18A2; 42A; fibroblast specific protein 1; FSP1; P9KA; PEL98; protein Mts1; fibroblast-specific protein-1; placental calcium-binding protein; malignant transformation suppression 1; leukemia multidrug resistance associated protein; S100 calcium-binding protein A4 (calcium protein, calvasculin, metastasin, murine placental homolog); CAPL; MTS1;

Gene ID [6275](#)

mRNA Refseq [NM_002961](#)

Protein Refseq [NP_002952](#)

MIM [114210](#)

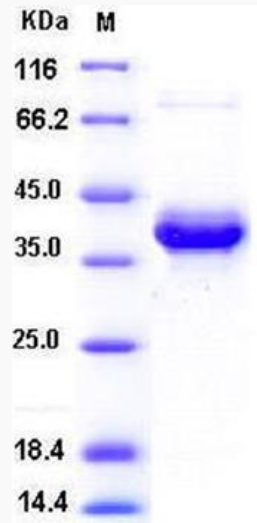
UniProt ID [P26447](#)

 Tel: 1-631-559-9269 1-516-512-3133

 Email: info@creative-biomart.com  Fax: 1-631-938-8127

 45-1 Ramsey Road, Shirley, NY 11967, USA

SDS-PAGE



 Tel: 1-631-559-9269 1-516-512-3133

 Email: info@creative-biomart.com  Fax: 1-631-938-8127

 45-1 Ramsey Road, Shirley, NY 11967, USA