

Recombinant Human S100A5 Protein, Myc/DDK-tagged, C13 and N15-labeled

Cat. No. S100A5-5408H **Lot. No.** (See product label)

SPECIFICATION

Product Overview	S100A5 MS Standard C13 and N15-labeled recombinant protein (NP_002953) with a C-terminal MYC/DDK tag, was expressed in HEK293 cells.
Species	Human
Source	HEK293
Description	The protein encoded by this gene is a member of the S100 family of proteins containing 2 EF-hand calcium-binding motifs. S100 proteins are localized in the cytoplasm and/or nucleus of a wide range of cells, and involved in the regulation of a number of cellular processes such as cell cycle progression and differentiation. S100 genes include at least 13 members which are located as a cluster on chromosome 1q21. This protein has a Ca ²⁺ affinity 20- to 100-fold higher than the other S100 proteins studied under identical conditions. This protein also binds Zn ²⁺ and Cu ²⁺ , and Cu ²⁺ strongly which impairs the binding of Ca ²⁺ . This protein is expressed in very restricted regions of the adult brain.
Molecular Mass	12.8 kDa
AA Sequence	MPAAWILWAHSHSELHTVMETPLEKALTTMVTTFHKYSGREGSKLTLRSELKELIK KELCLGEMKESSIDDLMKSLDKNSDQEIDFKEYSVFLTMLCMAYNDFFLEDNKTRTR PLEQKLISEEDLAANDILDYKDDDDKV
Purity	> 80% as determined by SDS-PAGE and Coomassie blue staining

 Tel: 1-631-559-9269 1-516-512-3133

 Email: info@creative-biomart.com  Fax: 1-631-938-8127

 45-1 Ramsey Road, Shirley, NY 11967, USA

Stability	Stable for 3 months from receipt of products under proper storage and handling conditions.
Storage	Store at -80 centigrade. Avoid repeated freeze-thaw cycles.
Concentration	50 µg/mL as determined by BCA
Storage Buffer	100 mM glycine, 25 mM Tris-HCl, pH 7.3.

GENE INFORMATION

Gene Name	S100A5 S100 calcium binding protein A5 [Homo sapiens (human)]
Official Symbol	S100A5
Synonyms	S100A5; S100 calcium binding protein A5; S100 calcium binding protein A5, S100D; protein S100-A5; S100 calcium-binding protein A5; S100D;
Gene ID	6276
mRNA Refseq	NM_002962
Protein Refseq	NP_002953
MIM	176991
UniProt ID	P33763

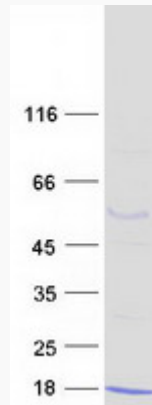
 Tel: 1-631-559-9269 1-516-512-3133

 Email: info@creative-biomart.com  Fax: 1-631-938-8127

 45-1 Ramsey Road, Shirley, NY 11967, USA



SDS-PAGE



Tel: 1-631-559-9269 1-516-512-3133

Email: info@creative-biomart.com Fax: 1-631-938-8127

45-1 Ramsey Road, Shirley, NY 11967, USA