

## Recombinant Human S100A6 protein, His-tagged

Cat. No. S100A6-1773H Lot. No. (See product label)

### SPECIFICATION

<b>Product Overview</b>	Recombinant Human S100A6 protein(Met1~Gly90), fused with N-terminal His tag, was expressed in E. coli.
<b>Species</b>	Human
<b>Source</b>	E.coli
<b>ProteinLength</b>	Met1~Gly90
<b>Form</b>	20mM Tris, 150mM NaCl, pH8.0, containing 0.05% sarcosyl and 5% trehalose.
<b>Bio-activity</b>	S100A6 is a calcium-binding protein, which functions as calcium sensor and modulator, contributing to cellular calcium signaling. It is reported that S100B and S100A6 differentially modulate cell survival by Interacting with distinct RAGE(Receptor for Advanced Glycation End Products). Thus a binding ELISA assay was conducted to detect the interaction of S100A6 and RAGE. Briefly, recombinant human S100A6 were diluted serially in PBS, with 0.01%BSA (pH 7.4). Duplicate samples of 100uL were then transferred to RAGE-coated microtiter wells and incubated for 2h at 37°C. Wells were washed with PBST and incubated for 1h with anti-S100A6 mAb, then aspirated and washed 3 times. After incubation with HRP labelled secondary antibody, wells were aspirated and washed 3 times. With the addition of substrate solution, wells were incubated 15-25 minutes at 37°C. Finally, add 50µL stop solution to the wells and read at 450nm immediately. The binding activity of of S100A6 and RAGE was shown in Figure, and this effect was in a dose

 Tel: 1-631-559-9269 1-516-512-3133

 Email: [info@creative-biomart.com](mailto:info@creative-biomart.com)  Fax: 1-631-938-8127

 45-1 Ramsey Road, Shirley, NY 11967, USA

dependent manner.

**Molecular Mass** 16kDa

**Purity** >92%

**Storage** Avoid repeated freeze/thaw cycles. Store at 2-8°C for one month. Aliquot and store at -80°C for 12 months.

**Reconstitution** Reconstitute in 20mM Tris, 150mM NaCl (pH8.0) to a concentration of 0.1-1.0 mg/mL. Do not vortex.

## GENE INFORMATION

**Gene Name** [S100A6 S100 calcium binding protein A6 \[ Homo sapiens \]](#)

**Official Symbol** [S100A6](#)

**Synonyms** S100A6; S100 calcium binding protein A6; CACY, S100 calcium binding protein A6 (calcyclin) , S100 calcium binding protein A6 (calcyclin); protein S100-A6; 2A9; CABP; PRA; MLN 4; calcyclin; growth factor-inducible protein 2A9; prolactin receptor-associated protein; S100 calcium-binding protein A6 (calcyclin); 5B10; CACY

**Gene ID** [6277](#)

**mRNA Refseq** [NM\\_014624](#)

**Protein Refseq** [NP\\_055439](#)

**MIM** [114110](#)

 Tel: 1-631-559-9269 1-516-512-3133

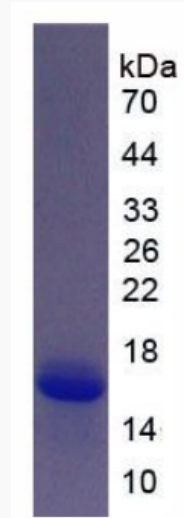
 Email: [info@creative-biomart.com](mailto:info@creative-biomart.com)  Fax: 1-631-938-8127

 45-1 Ramsey Road, Shirley, NY 11967, USA

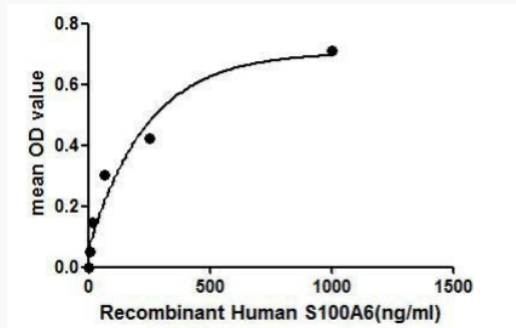
UniProt ID

P06703

SDS-PAGE



Activity



The binding activity of S100A6 with RAGE.

 Tel: 1-631-559-9269 1-516-512-3133

 Email: [info@creative-biomart.com](mailto:info@creative-biomart.com)  Fax: 1-631-938-8127

 45-1 Ramsey Road, Shirley, NY 11967, USA