

Recombinant Human S100A6 protein, His-tagged

Cat. No. S100A6-2212H Lot. No. (See product label)

SPECIFICATION

Product Overview	Recombinant Human S100A6 protein(NP_055439.1) (Met 1-Gly 90) was expressed in Insect Cells, with a C-terminal polyhistidine tag.
Species	Human
Source	Insect Cells
ProteinLength	1-90 aa
Form	Lyophilized from sterile 50mM Tris, 100mM NaCl, 0.5mM PMSF, 1mM TCEP, pH 8.0.
Molecular Mass	The recombinant human S100A6 consisting of 101 amino acids and migrates as an approximately 12 kDa band in SDS-PAGE under reducing conditions as predicted.
Endotoxin	< 1.0 EU per µg of the protein as determined by the LAL method.
Purity	> 96 % as determined by SDS-PAGE
Storage	Store it under sterile conditions at -20°C to -80°C upon receiving. Recommend to aliquot the protein into smaller quantities for optimal storage. Avoid repeated freeze-thaw cycles.
Reconstitution	It is recommended that sterile water be added to the vial to prepare a stock solution of 0.2 ug/ul. Centrifuge the vial at 4°C before opening to recover the entire contents.

 Tel: 1-631-559-9269 1-516-512-3133

 Email: info@creative-biomart.com  Fax: 1-631-938-8127

 45-1 Ramsey Road, Shirley, NY 11967, USA

protein Refseq-Weblink http://www.ncbi.nlm.nih.gov/protein/NP_055439.1

Unit ID P06703

Unit ID-Weblink <http://www.uniprot.org/uniprot/P06703>

GENE INFORMATION

Gene Name [S100A6 S100 calcium binding protein A6 \[Homo sapiens \]](#)

Official Symbol [S100A6](#)

Synonyms S100A6; S100 calcium binding protein A6; CACY, S100 calcium binding protein A6 (calyclin) , S100 calcium binding protein A6 (calyclin); protein S100-A6; 2A9; CABP; PRA; MLN 4; calyclin; growth factor-inducible protein 2A9; prolactin receptor-associated protein; S100 calcium-binding protein A6 (calyclin); 5B10; CACY;

Gene ID [6277](#)

mRNA Refseq [NM_014624](#)

protein Refseq NP_055439

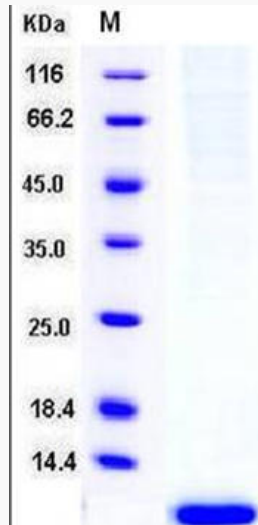
MIM [114110](#)

 Tel: 1-631-559-9269 1-516-512-3133

 Email: info@creative-biomart.com  Fax: 1-631-938-8127

 45-1 Ramsey Road, Shirley, NY 11967, USA

SDS-PAGE



 Tel: 1-631-559-9269 1-516-512-3133

 Email: info@creative-biomart.com  Fax: 1-631-938-8127

 45-1 Ramsey Road, Shirley, NY 11967, USA