

## Recombinant Human S100A6 protein, His-tagged

Cat. No. S100A6-2544H Lot. No. (See product label)

### SPECIFICATION

|                         |   |
|-------------------------|---|
| <b>Product Overview</b> | Recombinant Human S100A6 protein(P06703)(105aa), fused with N-terminal His tag, was expressed in E. coli.   |
| <b>Species</b>          | Human   |
| <b>Source</b>           | E.coli  |
| <b>Protein Length</b>   | 105aa(including fusion tag)   |
| <b>Tag</b>              | N-His   |
| <b>Form</b>             | 20mM Tris.Cl, 50mM NaCl, 50% Glycerol, pH8.0.   |
| <b>Molecular Mass</b>   | 10.2kDa(including fusion tag)   |
| <b>Storage</b>          | Store at -80°C and avoid repeated freeze-thaw cycles.   |
| <b>Reconstitution</b>   | It is recommended that sterile water be added to the vial to prepare a stock solution of 0.2 ug/ul. Centrifuge the vial at 4°C before opening to recover the entire contents. |

### GENE INFORMATION

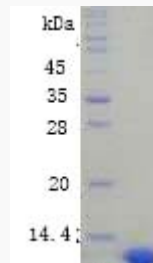
|                        |   |
|------------------------|---|
| <b>Gene Name</b>       | S100A6 S100 calcium binding protein A6 [ Homo sapiens ] |
| <b>Official Symbol</b> | S100A6  |

 Tel: 1-631-559-9269 1-516-512-3133

 Email: [info@creative-biomart.com](mailto:info@creative-biomart.com)  Fax: 1-631-938-8127

 45-1 Ramsey Road, Shirley, NY 11967, USA

|                       |   |
|-----------------------|---|
| <b>Synonyms</b>       | S100A6; S100 calcium binding protein A6; CACY, S100 calcium binding protein A6 (calcyclin) , S100 calcium binding protein A6 (calcyclin); protein S100-A6; 2A9; CABP; PRA; MLN 4; calcyclin; growth factor-inducible protein 2A9; prolactin receptor-associated protein; S100 calcium-binding protein A6 (calcyclin); 5B10; CACY; |
| <b>Gene ID</b>        | 6277  |
| <b>mRNA Refseq</b>    | NM_014624   |
| <b>Protein Refseq</b> | NP_055439   |
| <b>MIM</b>            | 114110  |
| <b>UniProt ID</b>     | P06703  |

**SDS-PAGE**


 Tel: 1-631-559-9269 1-516-512-3133

 Email: [info@creative-biomart.com](mailto:info@creative-biomart.com)  Fax: 1-631-938-8127

 45-1 Ramsey Road, Shirley, NY 11967, USA