

# Recombinant Human S100A6 Protein, Myc/DDK-tagged, C13 and N15-labeled

**Cat. No.** S100A6-4913H    **Lot. No.** (See product label)

## SPECIFICATION

### Product Overview

S100A6 MS Standard C13 and N15-labeled recombinant protein (NP\_055439) with a C-terminal MYC/DDK tag, was expressed in HEK293 cells.

### Species

Human

### Source

HEK293

### Description

The protein encoded by this gene is a member of the S100 family of proteins containing 2 EF-hand calcium-binding motifs. S100 proteins are localized in the cytoplasm and/or nucleus of a wide range of cells, and involved in the regulation of a number of cellular processes such as cell cycle progression and differentiation. S100 genes include at least 13 members which are located as a cluster on chromosome 1q21. This protein may function in stimulation of Ca<sup>2+</sup>-dependent insulin release, stimulation of prolactin secretion, and exocytosis. Chromosomal rearrangements and altered expression of this gene have been implicated in melanoma.

### Molecular Mass


10.2 kDa

### AA Sequence

MACPLDQAIGLLVAIFHKYSGREGDKHTLSKKELKELIQKELTIGSKLQDAEIARLMED  
LDRNKDQEVNFQEYVTFGLALALIYNEALKGTRTRPLEQKLISEEDLAANDILDYKDD  
DDKV

### Purity

> 80% as determined by SDS-PAGE and Coomassie blue staining

 Tel: 1-631-559-9269    1-516-512-3133

 Email: [info@creative-biomart.com](mailto:info@creative-biomart.com)     Fax: 1-631-938-8127

 45-1 Ramsey Road, Shirley, NY 11967, USA

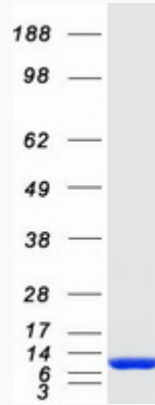
<b>Stability</b>	Stable for 3 months from receipt of products under proper storage and handling conditions.
<b>Storage</b>	Store at -80 centigrade. Avoid repeated freeze-thaw cycles.
<b>Concentration</b>	50 µg/mL as determined by BCA
<b>Storage Buffer</b>	100 mM glycine, 25 mM Tris-HCl, pH 7.3.
<b>GENE INFORMATION</b>	
<b>Gene Name</b>	<a href="#">S100A6</a> <a href="#">S100 calcium binding protein A6 [ Homo sapiens (human) ]</a>
<b>Official Symbol</b>	<a href="#">S100A6</a>
<b>Synonyms</b>	S100A6; S100 calcium binding protein A6; CACY, S100 calcium binding protein A6 (calcyclin), S100 calcium binding protein A6 (calcyclin); protein S100-A6; 2A9; CABP; PRA; MLN 4; calcyclin; growth factor-inducible protein 2A9; prolactin receptor-associated protein; S100 calcium-binding protein A6 (calcyclin); 5B10; CACY;
<b>Gene ID</b>	<a href="#">6277</a>
<b>mRNA Refseq</b>	<a href="#">NM_014624</a>
<b>Protein Refseq</b>	<a href="#">NP_055439</a>
<b>MIM</b>	<a href="#">114110</a>
<b>UniProt ID</b>	<a href="#">P06703</a>

 Tel: 1-631-559-9269 1-516-512-3133

 Email: [info@creative-biomart.com](mailto:info@creative-biomart.com)  Fax: 1-631-938-8127

 45-1 Ramsey Road, Shirley, NY 11967, USA

SDS-PAGE



 Tel: 1-631-559-9269 1-516-512-3133

 Email: [info@creative-biomart.com](mailto:info@creative-biomart.com)  Fax: 1-631-938-8127

 45-1 Ramsey Road, Shirley, NY 11967, USA