

Recombinant Human S100A6 protein

Cat. No. S100A6-620H Lot. No. (See product label)

SPECIFICATION

Product Overview	Recombinant Human S100A6 protein(NP_055439.1) (Met 1-Gly 90) was expressed in E. coli.
Species	Human
Source	E. coli
ProteinLength	1-90 aa
Form	Lyophilized from sterile PBS, pH 7.4.
Molecular Mass	The recombinant human S100A6 consisting of 90 amino acids and migrates with an apparent molecular mass of 20 & 10 kDa corresponding to dimeric and monomeric form as estimated in SDS-PAGE under Non-reduced condition.
Purity	> 95 % as determined by SDS-PAGE
Storage	Store it under sterile conditions at -20°C to -80°C upon receiving. Recommend to aliquot the protein into smaller quantities for optimal storage. Avoid repeated freeze-thaw cycles.
Reconstitution	It is recommended that sterile water be added to the vial to prepare a stock solution of 0.2 ug/ul. Centrifuge the vial at 4°C before opening to recover the entire contents.
protein Refseq-	http://www.ncbi.nlm.nih.gov/protein/NP_055439.1

 Tel: 1-631-559-9269 1-516-512-3133

 Email: info@creative-biomart.com  Fax: 1-631-938-8127

 45-1 Ramsey Road, Shirley, NY 11967, USA

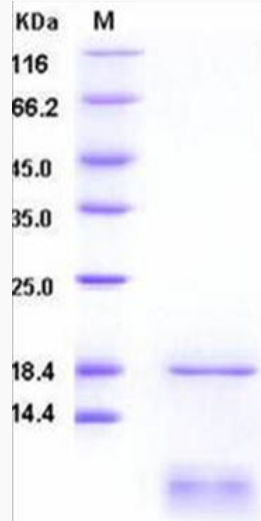
Weblink	
Unit ID	P06703
Unit ID-Weblink	http://www.uniprot.org/uniprot/P06703
GENE INFORMATION	
Gene Name	S100A6 S100 calcium binding protein A6 [Homo sapiens]
Official Symbol	S100A6
Synonyms	S100A6; S100 calcium binding protein A6; CACY, S100 calcium binding protein A6 (calcyclin) , S100 calcium binding protein A6 (calcyclin); protein S100-A6; 2A9; CABP; PRA; MLN 4; calcyclin; growth factor-inducible protein 2A9; prolactin receptor-associated protein; S100 calcium-binding protein A6 (calcyclin); 5B10; CACY;
Gene ID	6277
mRNA Refseq	NM_014624
protein Refseq	NP_055439
MIM	114110

 Tel: 1-631-559-9269 1-516-512-3133

 Email: info@creative-biomart.com  Fax: 1-631-938-8127

 45-1 Ramsey Road, Shirley, NY 11967, USA

SDS-PAGE



 Tel: 1-631-559-9269 1-516-512-3133

 Email: info@creative-biomart.com  Fax: 1-631-938-8127

 45-1 Ramsey Road, Shirley, NY 11967, USA