

## Recombinant Bovine S100A7 Protein, His/GST-tagged

Cat. No. S100A7-143B Lot. No. (See product label)

### SPECIFICATION

<b>Product Overview</b>	Recombinant Bovine S100A7(Met1~Gln101) fused with His/GST tag at N-terminal was expressed in E. coli.
<b>Species</b>	Bovine
<b>Source</b>	E.coli
<b>ProteinLength</b>	Met1~Gln101
<b>Form</b>	PBS, pH7.4, containing 0.01% SKL, 1mM DTT, 5% Trehalose and Proclin300.
<b>Molecular Mass</b>	43.9kDa
<b>Endotoxin</b>	<1.0EU per 1ug (determined by the LAL method)
<b>Purity</b>	> 95%
<b>Applications</b>	Positive Control; Immunogen; SDS-PAGE; WB. If bio-activity of the protein is needed, please check active protein
<b>Stability</b>	The thermal stability is described by the loss rate. The loss rate was determined by accelerated thermal degradation test, that is, incubate the protein at 37 centigrade for 48h, and no obvious degradation and precipitation were observed. The loss rate is less than 5% within the expiration date under appropriate storage condition.

 Tel: 1-631-559-9269 1-516-512-3133

 Email: [info@creative-biomart.com](mailto:info@creative-biomart.com)  Fax: 1-631-938-8127

 45-1 Ramsey Road, Shirley, NY 11967, USA

<b>Storage</b>	Avoid repeated freeze/thaw cycles. Store at 2-8 centigrade for one month. Aliquot and store at -80 centigrade for 12 months.
----------------	--

<b>Reconstitution</b>	Reconstitute in PBS or others
-----------------------	-------------------------------

## GENE INFORMATION

<b>Gene Name</b>	S100A7 S100 calcium binding protein A7 [ Bos taurus ]
------------------	---

<b>Official Symbol</b>	S100A7
------------------------	--------

<b>Synonyms</b>	CAAF2; S100 calcium-binding protein A7 (psoriasis 1); calcium-binding protein in amniotic fluid 2; dander minor allergen BDA11; dermal allergen BDA11
-----------------	---

<b>Gene ID</b>	282344
----------------	--------

<b>mRNA Refseq</b>	NM_174596
--------------------	-----------

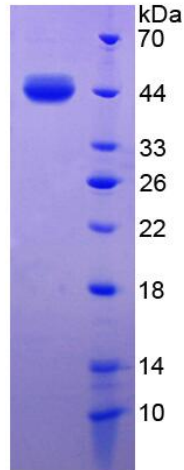
<b>Protein Refseq</b>	NP_777021
-----------------------	-----------

<b>UniProt ID</b>	Q28050
-------------------	--------

 Tel: 1-631-559-9269 1-516-512-3133

 Email: [info@creative-biomart.com](mailto:info@creative-biomart.com)  Fax: 1-631-938-8127

 45-1 Ramsey Road, Shirley, NY 11967, USA



15% SDS-PAGE

Tel: 1-631-559-9269 1-516-512-3133

Email: [info@creative-biomart.com](mailto:info@creative-biomart.com) Fax: 1-631-938-8127

45-1 Ramsey Road, Shirley, NY 11967, USA