

## Recombinant Human S100A7 protein

Cat. No. S100A7-3095H Lot. No. (See product label)

### SPECIFICATION

<b>Product Overview</b>	Recombinant Human S100A7 protein(NP_002954.2) (Met 1-Gln 101) was expressed in E. coli.
<b>Species</b>	Human
<b>Source</b>	E. coli
<b>ProteinLength</b>	1-101 aa
<b>Form</b>	Lyophilized from sterile PBS, pH 7.4.
<b>Molecular Mass</b>	The recombinant human S100A7 consisting of 101 amino acids and migrates as an 11.6 kDa band in SDS-PAGE under reducing conditions as predicted.
<b>Purity</b>	> 98 % as determined by SDS-PAGE
<b>Storage</b>	Store it under sterile conditions at -20°C to -80°C upon receiving. Recommend to aliquot the protein into smaller quantities for optimal storage. Avoid repeated freeze-thaw cycles.
<b>Reconstitution</b>	It is recommended that sterile water be added to the vial to prepare a stock solution of 0.2 ug/ul. Centrifuge the vial at 4°C before opening to recover the entire contents.
<b>protein Refseq-Weblink</b>	<a href="http://www.ncbi.nlm.nih.gov/protein/NP_002954.2">http://www.ncbi.nlm.nih.gov/protein/NP_002954.2</a>

 Tel: 1-631-559-9269 1-516-512-3133

 Email: [info@creative-biomart.com](mailto:info@creative-biomart.com)  Fax: 1-631-938-8127

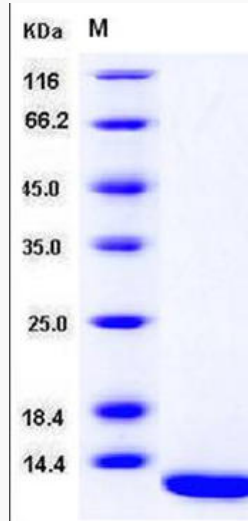
 45-1 Ramsey Road, Shirley, NY 11967, USA

**Unit ID** P31151**Unit ID-Weblink** <https://www.uniprot.org/uniprotkb/P31151>

## GENE INFORMATION

**Gene Name** S100A7 S100 calcium binding protein A7 [ Homo sapiens ]**Official Symbol** S100A7**Synonyms** S100A7; S100 calcium binding protein A7; PSOR1, S100 calcium binding protein A7 (psoriasis 1), S100 calcium binding protein A7 (psoriasis 1); protein S100-A7; S100A7c; psoriasis 1; S100 calcium-binding protein A7 (psoriasis 1); PSOR1;**Gene ID** 6278**mRNA Refseq** NM\_002963**protein Refseq** NP\_002954**MIM** 600353 Tel: 1-631-559-9269 1-516-512-3133 Email: [info@creative-biomart.com](mailto:info@creative-biomart.com)  Fax: 1-631-938-8127 45-1 Ramsey Road, Shirley, NY 11967, USA

**SDS-PAGE**



 Tel: 1-631-559-9269 1-516-512-3133

 Email: [info@creative-biomart.com](mailto:info@creative-biomart.com)  Fax: 1-631-938-8127

 45-1 Ramsey Road, Shirley, NY 11967, USA