

Recombinant Human S100A7 Protein, Myc/DDK-tagged, C13 and N15-labeled

Cat. No. S100A7-4977H **Lot. No.** (See product label)

SPECIFICATION

Product Overview	S100A7 MS Standard C13 and N15-labeled recombinant protein (NP_002954) with a C-terminal MYC/DDK tag, was expressed in HEK293 cells.
Species	Human
Source	HEK293
Description	The protein encoded by this gene is a member of the S100 family of proteins containing 2 EF-hand calcium-binding motifs. S100 proteins are localized in the cytoplasm and/or nucleus of a wide range of cells, and involved in the regulation of a number of cellular processes such as cell cycle progression and differentiation. S100 genes include at least 13 members which are located as a cluster on chromosome 1q21. This protein differs from the other S100 proteins of known structure in its lack of calcium binding ability in one EF-hand at the N-terminus. The protein is overexpressed in hyperproliferative skin diseases, exhibits antimicrobial activities against bacteria and induces immunomodulatory activities.
Molecular Mass	11.5 kDa
AA Sequence	MSNTQAERSIIGMIDMFHKYTRRDDKIDKPSLLTMMKENFPNFLSACDKKGTNYLAD VFEKKDKNEDKKIDFSEFLSLLGDIATDYHKQSHGAAPCSGGSQTRTRPLEQKLISEE DLAANDILDYKDDDDKV
Purity	> 80% as determined by SDS-PAGE and Coomassie blue staining

 Tel: 1-631-559-9269 1-516-512-3133

 Email: info@creative-biomart.com  Fax: 1-631-938-8127

 45-1 Ramsey Road, Shirley, NY 11967, USA

Stability	Stable for 3 months from receipt of products under proper storage and handling conditions.
Storage	Store at -80 centigrade. Avoid repeated freeze-thaw cycles.
Concentration	50 µg/mL as determined by BCA
Storage Buffer	100 mM glycine, 25 mM Tris-HCl, pH 7.3.

GENE INFORMATION

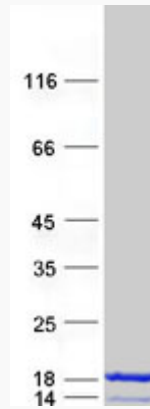
Gene Name	S100A7 S100 calcium binding protein A7 [Homo sapiens (human)]
Official Symbol	S100A7
Synonyms	S100A7; S100 calcium binding protein A7; PSOR1, S100 calcium binding protein A7 (psoriasis 1), S100 calcium binding protein A7 (psoriasis 1); protein S100-A7; S100A7c; psoriasis 1; S100 calcium-binding protein A7 (psoriasis 1); PSOR1;
Gene ID	6278
mRNA Refseq	NM_002963
Protein Refseq	NP_002954
MIM	600353
UniProt ID	P31151

 Tel: 1-631-559-9269 1-516-512-3133

 Email: info@creative-biomart.com  Fax: 1-631-938-8127

 45-1 Ramsey Road, Shirley, NY 11967, USA

SDS-PAGE



 Tel: 1-631-559-9269 1-516-512-3133

 Email: info@creative-biomart.com  Fax: 1-631-938-8127

 45-1 Ramsey Road, Shirley, NY 11967, USA