

Recombinant Human S100A8 Protein (Leu2-Glu93), N-His-tagged

Cat. No. S100A8-12H Lot. No. (See product label)

SPECIFICATION

Product Overview

Recombinant Human S100A8 (Leu2-Glu93) protein with a N-His tag was derived from the transfected human HEK293 cells.

Species

Human

Source

HEK293

ProteinLength

Leu2-Glu93

Description

The protein encoded by this gene is a member of the S100 family of proteins containing 2 EF-hand calcium-binding motifs. S100 proteins are localized in the cytoplasm and/or nucleus of a wide range of cells, and involved in the regulation of a number of cellular processes such as cell cycle progression and differentiation. S100 genes include at least 13 members which are located as a cluster on chromosome 1q21. This protein may function in the inhibition of casein kinase and as a cytokine. Altered expression of this protein is associated with the disease cystic fibrosis. Multiple transcript variants encoding different isoforms have been found for this gene.

Form

Lyophilized powder

Molecular Mass

11 kDa

Purity

> 95%, SDS-PAGE under reducing conditions and visualized by Coomassie blue staining

 Tel: 1-631-559-9269 1-516-512-3133

 Email: info@creative-biomart.com  Fax: 1-631-938-8127

 45-1 Ramsey Road, Shirley, NY 11967, USA

Applications	Protein-protein Interaction, Post-translational Modifications, ELISA, EIA, Western Blotting, Dot Blotting, Immunoprecipitation, Protein Array, etc.
Usage	This product is furnished for LABORATORY RESEARCH USE ONLY. Not for diagnostic or therapeutic use.
Storage	Upon arrival, the lyophilized protein may be stored for 2 weeks at 4 centigrade. For long term storage, it is recommended to store desiccated below -20 centigrade in a manual defrost freezer. Following reconstitution, the protein may be stored for 2 weeks under sterile conditions at -20 centigrade. For long term storage, it is recommended to make appropriate aliquots and store at -80 centigrade. Avoid repeated freeze-thaw cycles.
Storage Buffer	Lyophilized from a 0.2 µm filtered solution in PBS
Reconstitution	Briefly spin the vial and bring the contents to the bottom prior to opening. It is recommended to reconstitute at 0.5 - 1 mg/mL with sterile deionized water.
Shipping	Ice packs

GENE INFORMATION

Gene Name	S100A8 S100 calcium binding protein A8 [Homo sapiens (human)]
Official Symbol	S100A8
Synonyms	S100A8; S100 calcium binding protein A8; P8; MIF; NIF; CAGA; CFAG; CGLA; L1Ag; MRP8; CP-10; MA387; 60B8AG; S100-A8; protein S100-A8; calgranulin A; calprotectin L1L subunit; cystic fibrosis antigen; leukocyte L1 complex light chain; migration inhibitory factor-related protein 8; urinary stone protein band A

 Tel: 1-631-559-9269 1-516-512-3133

 Email: info@creative-biomart.com  Fax: 1-631-938-8127

 45-1 Ramsey Road, Shirley, NY 11967, USA

Gene ID 6279

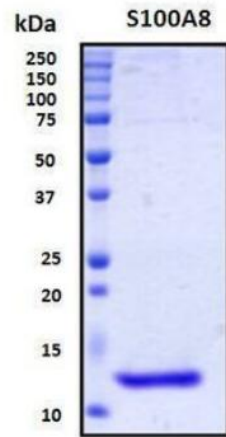
mRNA Refseq NM_002964

Protein Refseq NP_002955

MIM 123885

UniProt ID P05109

SDS-PAGE



 Tel: 1-631-559-9269 1-516-512-3133

 Email: info@creative-biomart.com  Fax: 1-631-938-8127

 45-1 Ramsey Road, Shirley, NY 11967, USA