

Active Recombinant Human S100A8 protein, His-tagged

Cat. No. S100A8-2216H Lot. No. (See product label)

SPECIFICATION

Product Overview	Active Recombinant Human S100A8 protein(NP_002955.2) (Met 1-Glu 93) was expressed in Insect Cells, fused with a polyhistidine tag at the C-terminus.
Species	Human
Source	Insect Cells
ProteinLength	1-93 aa
Form	Lyophilized from sterile 20 mM Tris, 500 mM NaCl, 10 % glycerol, pH 8.0.
Bio-activity	Measured by its ability to bind recombinant human S100A9 in a functional ELISA.
Molecular Mass	The recombinant human S100A8 consists of 103 amino acids and predicts a molecular mass of 12.2 kDa. It migrates as an approximately 14.6 kDa band in SDS-PAGE under reducing conditions.
Endotoxin	< 1.0 EU per µg of the protein as determined by the LAL method.
Purity	> 90 % as determined by SDS-PAGE
Storage	Store it under sterile conditions at -20°C to -80°C upon receiving. Recommend to aliquot the protein into smaller quantities for optimal storage. Avoid repeated freeze-thaw cycles.

 Tel: 1-631-559-9269 1-516-512-3133

 Email: info@creative-biomart.com  Fax: 1-631-938-8127

 45-1 Ramsey Road, Shirley, NY 11967, USA

Reconstitution	It is recommended that sterile water be added to the vial to prepare a stock solution of 0.2 ug/ul. Centrifuge the vial at 4°C before opening to recover the entire contents.
protein Refseq-Weblink	http://www.ncbi.nlm.nih.gov/protein/NP_002955.2
Unit ID	P05109
Unit ID-Weblink	https://www.uniprot.org/uniprotkb/P05109

GENE INFORMATION

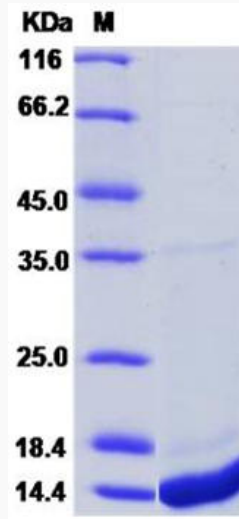
Gene Name	S100A8 S100 calcium binding protein A8 [Homo sapiens]
Official Symbol	S100A8
Synonyms	S100A8; S100 calcium binding protein A8; CAGA, CFAG, S100 calcium binding protein A8 (calgranulin A), S100 calcium binding protein A8 (calgranulin A); protein S100-A8; 60B8AG; CGLA; MRP8; P8; MRP-8; calgranulin A; calgranulin-A; cystic fibrosis antigen; calprotectin L1L subunit; urinary stone protein band A; leukocyte L1 complex light chain; migration inhibitory factor-related protein 8; S100 calcium-binding protein A8 (calgranulin A); MIF; NIF; CAGA; CFAG; L1Ag; CP-10; MA387;
Gene ID	6279
mRNA Refseq	NM_002964
protein Refseq	NP_002955
MIM	123885

 Tel: 1-631-559-9269 1-516-512-3133

 Email: info@creative-biomart.com  Fax: 1-631-938-8127

 45-1 Ramsey Road, Shirley, NY 11967, USA

SDS-PAGE



 Tel: 1-631-559-9269 1-516-512-3133

 Email: info@creative-biomart.com  Fax: 1-631-938-8127

 45-1 Ramsey Road, Shirley, NY 11967, USA