

## Active Recombinant Human S100A8 protein, His-tagged

Cat. No. S100A8-2671H Lot. No. (See product label)

### SPECIFICATION

<b>Product Overview</b>	Active Recombinant Human S100A8 protein(NP_002955.2) (Leu 2-Glu 93) was expressed in E. coli, with a polyhistidine tag at the N-terminus.
<b>Species</b>	Human
<b>Source</b>	E. coli
<b>ProteinLength</b>	2-93 aa
<b>Form</b>	Lyophilized from sterile 20mM Tris, pH 8.5, 10% glycerol.
<b>Bio-activity</b>	<ol style="list-style-type: none"> <li>1. Measured by its ability to bind recombinant human S100A9 in a functional ELISA.</li> <li>2. Measured by its ability to inhibit the proliferation of MCF7 human breast adenocarcinoma cells. The ED50 for this effect is typically 10-30 µg/mL.</li> </ol>
<b>Molecular Mass</b>	The recombinant human S100A8 consisting of 103 amino acids and migrates as an approximately 12.2 kDa band in SDS-PAGE under reducing conditions as predicted.
<b>Purity</b>	> 95 % as determined by SDS-PAGE
<b>Storage</b>	Store it under sterile conditions at -20°C to -80°C upon receiving. Recommend to aliquot the protein into smaller quantities for optimal storage. Avoid repeated freeze-thaw cycles.
<b>Reconstitution</b>	It is recommended that sterile water be added to the vial to prepare a stock solution of

 Tel: 1-631-559-9269 1-516-512-3133

 Email: [info@creative-biomart.com](mailto:info@creative-biomart.com)  Fax: 1-631-938-8127

 45-1 Ramsey Road, Shirley, NY 11967, USA

0.2 ug/ul. Centrifuge the vial at 4°C before opening to recover the entire contents.

**protein Refseq-Weblink** [http://www.ncbi.nlm.nih.gov/protein/NP\\_002955.2](http://www.ncbi.nlm.nih.gov/protein/NP_002955.2)

**Unit ID** P05109

**Unit ID-Weblink** <https://www.uniprot.org/uniprotkb/P05109>

## GENE INFORMATION

**Gene Name** [S100A8 S100 calcium binding protein A8 \[ Homo sapiens \]](#)

**Official Symbol** [S100A8](#)

**Synonyms**

S100A8; S100 calcium binding protein A8; CAGA, CFAG, S100 calcium binding protein A8 (calgranulin A), S100 calcium binding protein A8 (calgranulin A); protein S100-A8; 60B8AG; CGLA; MRP8; P8; MRP-8; calgranulin A; calgranulin-A; cystic fibrosis antigen; calprotectin L1L subunit; urinary stone protein band A; leukocyte L1 complex light chain; migration inhibitory factor-related protein 8; S100 calcium-binding protein A8 (calgranulin A); MIF; NIF; CAGA; CFAG; L1Ag; CP-10; MA387;

**Gene ID** [6279](#)

**mRNA Refseq** [NM\\_002964](#)

**protein Refseq** [NP\\_002955](#)

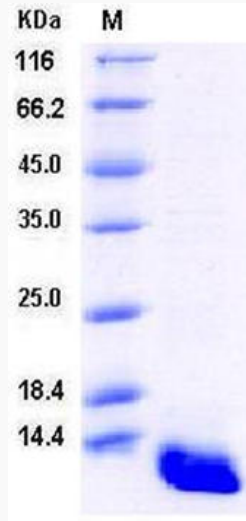
**MIM** [123885](#)

 Tel: 1-631-559-9269 1-516-512-3133

 Email: [info@creative-biomart.com](mailto:info@creative-biomart.com)  Fax: 1-631-938-8127

 45-1 Ramsey Road, Shirley, NY 11967, USA

**SDS-PAGE**



 Tel: 1-631-559-9269 1-516-512-3133

 Email: [info@creative-biomart.com](mailto:info@creative-biomart.com)  Fax: 1-631-938-8127

 45-1 Ramsey Road, Shirley, NY 11967, USA