

# Recombinant Human S100A8 protein

**Cat. No.** S100A8-320H    **Lot. No.** (See product label)

## SPECIFICATION

<b>Product Overview</b>	Recombinant Human S100A8 protein (Met1-Glu93) carries no tag and was expressed in E.coli.
<b>Species</b>	Human
<b>Source</b>	E.coli
<b>ProteinLength</b>	93
<b>Description</b>	<p>S100 calcium binding protein A8 (S100-A8) is also known as Cystic fibrosis antigen, Migration inhibitory factor-related protein 8 60B8AG, CAGA, CFAG, CGLA, CP-10, L1Ag, MA387, MIF, MRP8, NIF and P8, is a member of the S100 family of proteins containing 2 EF-hand calcium-binding motifs. S100 proteins are localized in the cytoplasm and/or nucleus of a wide range of cells, and involved in the regulation of a number of cellular processes such as cell cycle progression and differentiation. S100 genes include at least 13 members which are located as a cluster on chromosome 1q21. Most S100 proteins are disulfide-linked homodimer, and is normally present in cells derived from the neural crest, chondrocytes, macrophages, dendritic cells, etc. S100A8 plays a role in various functions of myeloid cells by forming a heterocomplex with S100A9. S100A8 and S100A9 are known to be overexpressed in certain species of carcinomas. S100A8 may function in the inhibition of casein kinase and as a cytokine. Altered expression of this protein is associated with the disease cystic fibrosis. S100A8 plays an important role in differentiation of thyroid carcinoma possibly by forming a complex with S100A9. S100A8 and S100A9 may also play a</p>

 Tel: 1-631-559-9269    1-516-512-3133

 Email: [info@creative-biomart.com](mailto:info@creative-biomart.com)     Fax: 1-631-938-8127

 45-1 Ramsey Road, Shirley, NY 11967, USA

	key role in inflammation-associated cancer.
<b>Form</b>	Lyophilized from 0.22 um filtered solution in PBS, pH7.4, 10% trehalose.
<b>Molecular Mass</b>	The protein has a calculated MW of 10.8 kDa. The protein migrates as 10.8 kDa under reducing (R) condition (SDS-PAGE).
<b>Endotoxin</b>	Less than 1.0 EU per ug by the LAL method.
<b>Purity</b>	>95% as determined by SDS-PAGE.
<b>Storage</b>	<p>For long term storage, the product should be stored at lyophilized state at -20 centigrade or lower.</p> <p>Please avoid repeated freeze-thaw cycles.</p> <p>This product is stable after storage at:</p> <p>-20 centigrade to -70 centigrade for 12 months in lyophilized state;</p> <p>-70 centigrade for 3 months under sterile conditions after reconstitution.</p>
<b>Reconstitution</b>	It is recommended that sterile water be added to the vial to prepare a stock solution of 0.2 ug/ul. Centrifuge the vial at 4°C before opening to recover the entire contents.

## GENE INFORMATION

<b>Gene Name</b>	S100A8
<b>Official Symbol</b>	S100A8
<b>Synonyms</b>	S100A8; S100 calcium binding protein A8; CAGA, CFAG, S100 calcium binding protein A8 (calgranulin A) , S100 calcium binding protein A8 (calgranulin A); protein S100-A8; 60B8AG; CGLA; MRP8; P8; MRP-8; calgranulin A; calgranulin-A; cystic fibrosis antigen; calprotectin L1L subunit; urinary stone protein band A; leukocyte L1

 Tel: 1-631-559-9269 1-516-512-3133

 Email: [info@creative-biomart.com](mailto:info@creative-biomart.com)  Fax: 1-631-938-8127

 45-1 Ramsey Road, Shirley, NY 11967, USA

complex light chain; migration inhibitory factor-related protein 8; S100 calcium-binding protein A8 (calgranulin A); MIF; NIF; CAGA; CFAG; L1Ag; CP-10; MA387

**Gene ID** [6279](#)

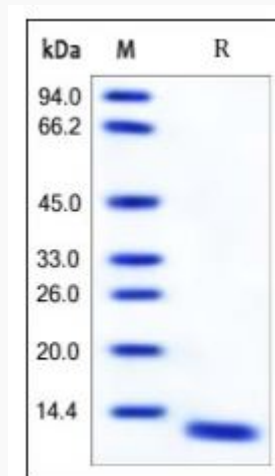
**mRNA Refseq** [NM\\_002964](#)

**Protein Refseq** [NP\\_002955](#)

**MIM** [123885](#)

**UniProt ID** [P05109](#)

**SDS-PAGE of  
S100A8-320H**



Human S100A8, Tag Free on SDS-PAGE under reducing (R) condition. The gel was stained overnight with Coomassie Blue. The purity of the protein is greater than 95%.

 Tel: 1-631-559-9269 1-516-512-3133

 Email: [info@creative-biomart.com](mailto:info@creative-biomart.com)  Fax: 1-631-938-8127

 45-1 Ramsey Road, Shirley, NY 11967, USA