

Recombinant Human S100A8 Protein (Met1-Glu93), C-His tagged

Cat. No. S100A8-6220H **Lot. No.** (See product label)

SPECIFICATION

Product Overview	Recombinant co-expressed human S100A8 (Met1-Glu93) fused with the C-terminal His tag and human S100A9 (Thr2-Pro114) fused with the C-terminal His tag was expressed in E. coli.
Species	Human
Source	E.coli
ProteinLength	Met1-Glu93
Form	Lyophilized powder/frozen liquid
Molecular Mass	S100A8 (11.87 kDa) & S100A9 (14.06 kDa)
Purity	> 90 % as determined by SDS-PAGE
Notes	For research use only.
Storage	Use a manual defrost freezer and avoid repeated freeze thaw cycles. Store at 2 to 8 centigrade for one week. Store at -20 to -80 centigrade for twelve months from the date of receipt.
Storage Buffer	Supplied as solution form in PBS, pH 7.5 or lyophilized from PBS, pH 7.5.

 Tel: 1-631-559-9269 1-516-512-3133

 Email: info@creative-biomart.com  Fax: 1-631-938-8127

 45-1 Ramsey Road, Shirley, NY 11967, USA

Reconstitution Reconstitute in sterile water for a stock solution.

Shipping They are shipped out with dry ice/blue ice unless customers require otherwise.

GENE INFORMATION

Gene Name [S100A8 S100 calcium binding protein A8 \[Homo sapiens \(human\) \]](#)

Official Symbol [S100A8](#)

Synonyms

S100A8; S100 calcium binding protein A8; CAGA, CFAG, S100 calcium binding protein A8 (calgranulin A), S100 calcium binding protein A8 (calgranulin A); protein S100-A8; 60B8AG; CGLA; MRP8; P8; MRP-8; calgranulin A; calgranulin-A; cystic fibrosis antigen; calprotectin L1L subunit; urinary stone protein band A; leukocyte L1 complex light chain; migration inhibitory factor-related protein 8; S100 calcium-binding protein A8 (calgranulin A); MIF; NIF; CAGA; CFAG; L1Ag; CP-10; MA387;

Gene ID [6279](#)

mRNA Refseq [NM_002964](#)

Protein Refseq [NP_002955](#)

MIM [123885](#)

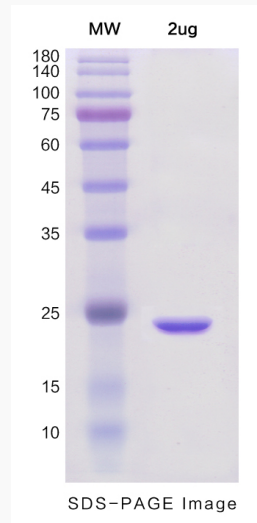
UniProt ID [P05109](#)

 Tel: 1-631-559-9269 1-516-512-3133

 Email: info@creative-biomart.com  Fax: 1-631-938-8127

 45-1 Ramsey Road, Shirley, NY 11967, USA

SDS-PAGE



 Tel: 1-631-559-9269 1-516-512-3133

 Email: info@creative-biomart.com  Fax: 1-631-938-8127

 45-1 Ramsey Road, Shirley, NY 11967, USA