

Active Recombinant Full Length Human S100A9 protein

Cat. No. S100A9-3879H Lot. No. (See product label)

SPECIFICATION

Product Overview	Active Recombinant Full Length Human S100A9 protein(NP_002956.1) (Met 1-Pro 114) was expressed in E. coli.
Species	Human
Source	E. coli
ProteinLength	1-114 aa
Form	Lyophilized from sterile PBS, pH 7.4.
Bio-activity	Measured by its ability to inhibit the proliferation of MCF7 human breast adenocarcinoma cells. The ED50 for this effect is typically 3-15 µg/mL.
Molecular Mass	The recombinant human S100A9 consisting of 114 amino acids and migrates with an apparent molecular mass of 26 & 13 kDa corresponding to dimeric and monomeric form as estimated in SDS-PAGE under Non-reduced condition.
Purity	> 95 % as determined by SDS-PAGE
Storage	Store it under sterile conditions at -20°C to -80°C upon receiving. Recommend to aliquot the protein into smaller quantities for optimal storage. Avoid repeated freeze-thaw cycles.
Reconstitution	It is recommended that sterile water be added to the vial to prepare a stock solution of

 Tel: 1-631-559-9269 1-516-512-3133

 Email: info@creative-biomart.com  Fax: 1-631-938-8127

 45-1 Ramsey Road, Shirley, NY 11967, USA

0.2 ug/ul. Centrifuge the vial at 4°C before opening to recover the entire contents.

protein Refseq-Weblink http://www.ncbi.nlm.nih.gov/protein/NP_002956.1

Unit ID P06702

Unit ID-Weblink <https://www.uniprot.org/uniprotkb/P06702>

GENE INFORMATION

Gene Name [S100A9 S100 calcium binding protein A9 \[Homo sapiens \]](#)

Official Symbol [S100A9](#)

Synonyms S100A9; S100 calcium binding protein A9; CAGB, CFAG, S100 calcium binding protein A9 (calgranulin B), S100 calcium binding protein A9 (calgranulin B); protein S100-A9; 60B8AG; CGLB; LIAG; MAC387; MIF; MRP14; NIF; P14; MRP-14; calgranulin B; calgranulin-B; calprotectin L1H subunit; leukocyte L1 complex heavy chain; migration inhibitory factor-related protein 14; S100 calcium-binding protein A9 (calgranulin B); CAGB; CFAG; L1AG;

Gene ID [6280](#)

mRNA Refseq [NM_002965](#)

protein Refseq NP_002956

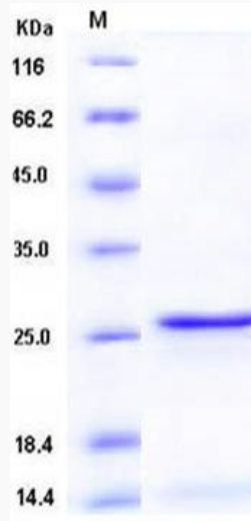
MIM [123886](#)

 Tel: 1-631-559-9269 1-516-512-3133

 Email: info@creative-biomart.com  Fax: 1-631-938-8127

 45-1 Ramsey Road, Shirley, NY 11967, USA

SDS-PAGE



 Tel: 1-631-559-9269 1-516-512-3133

 Email: info@creative-biomart.com  Fax: 1-631-938-8127

 45-1 Ramsey Road, Shirley, NY 11967, USA