

## Recombinant Human S100A9 protein, His-tagged

Cat. No. S100A9-4633H Lot. No. (See product label)

### SPECIFICATION

<b>Product Overview</b>	Recombinant Human S100A9 protein(P06702)(Thr2-Pro114), fused with C-terminal His tag, was expressed in E.coli.
<b>Species</b>	Human
<b>Source</b>	E.coli
<b>ProteinLength</b>	Thr2-Pro114
<b>Tag</b>	C-His
<b>Form</b>	Lyophilized from 0.22µm filtered solution in PBS (pH 7.4). Normally 8% trehalose is added as protectant before lyophilization.
<b>Molecular Mass</b>	The protein has a predicted MW of 14.3 kDa.The protein migrates to 27 kDa (dimer)&14.3 kDa (monomer) based on Tris-Bis PAGE result.
<b>Endotoxin</b>	Less than 1EU per µg by the LAL method.
<b>Purity</b>	> 95% as determined by Tris-Bis PAGE; > 95% as determined by HPLC
<b>Storage</b>	Reconstituted protein stable at -80°C for 12 months, 4°C for 1 week. Use a manual defrost freezer and avoid repeated freeze-thaw cycles.
<b>Reconstitution</b>	Centrifuge tubes before opening. Reconstituting to a concentration more than 100

 Tel: 1-631-559-9269 1-516-512-3133

 Email: [info@creative-biomart.com](mailto:info@creative-biomart.com)  Fax: 1-631-938-8127

 45-1 Ramsey Road, Shirley, NY 11967, USA

µg/ml is recommended. Dissolve the lyophilized protein in distilled water.

## GENE INFORMATION

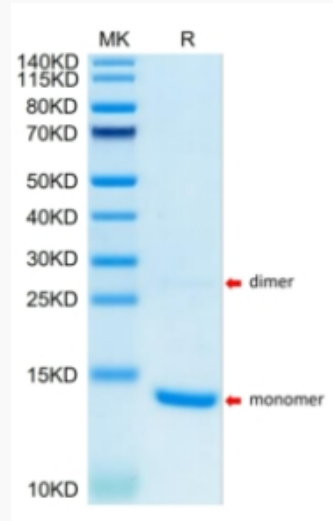
<b>Gene Name</b>	S100A9 S100 calcium binding protein A9 [ Homo sapiens ]
<b>Official Symbol</b>	S100A9
<b>Synonyms</b>	S100A9; S100 calcium binding protein A9; CAGB, CFAG, S100 calcium binding protein A9 (calgranulin B) , S100 calcium binding protein A9 (calgranulin B); protein S100-A9; 60B8AG; CGLB; LIAG; MAC387; MIF; MRP14; NIF; P14; MRP-14; calgranulin B; calgranulin-B; calprotectin L1H subunit; leukocyte L1 complex heavy chain; migration inhibitory factor-related protein 14; S100 calcium-binding protein A9 (calgranulin B); CAGB; CFAG; L1AG;
<b>Gene ID</b>	6280
<b>mRNA Refseq</b>	NM_002965
<b>Protein Refseq</b>	NP_002956
<b>MIM</b>	123886
<b>UniProt ID</b>	P06702

 Tel: 1-631-559-9269 1-516-512-3133

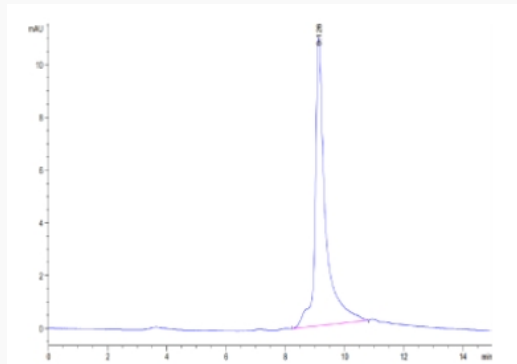
 Email: [info@creative-biomart.com](mailto:info@creative-biomart.com)  Fax: 1-631-938-8127

 45-1 Ramsey Road, Shirley, NY 11967, USA

Tris-Bis PAGE



SEC-HPLC



Tel: 1-631-559-9269 1-516-512-3133

Email: [info@creative-biomart.com](mailto:info@creative-biomart.com) Fax: 1-631-938-8127

45-1 Ramsey Road, Shirley, NY 11967, USA