

## Recombinant Human S100A9 Protein (Thr2-Pro114), N-His tagged

Cat. No. S100A9-6221H Lot. No. (See product label)

### SPECIFICATION

<b>Product Overview</b>	Recombinant human S100A9 (Thr2-Pro114) fused with the N-His tag was expressed in E. coli.
<b>Species</b>	Human
<b>Source</b>	E.coli
<b>ProteinLength</b>	Thr2-Pro114
<b>Form</b>	Lyophilized powder/frozen liquid
<b>Molecular Mass</b>	15.42 kDa
<b>Purity</b>	> 90 % as determined by SDS-PAGE
<b>Notes</b>	For research use only.
<b>Storage</b>	Use a manual defrost freezer and avoid repeated freeze thaw cycles. Store at 2 to 8 centigrade for one week. Store at -20 to -80 centigrade for twelve months from the date of receipt.
<b>Storage Buffer</b>	0.01M PBS, pH 7.4, 0.02 % NLS
<b>Reconstitution</b>	Reconstitute in sterile water for a stock solution.

 Tel: 1-631-559-9269 1-516-512-3133

 Email: [info@creative-biomart.com](mailto:info@creative-biomart.com)  Fax: 1-631-938-8127

 45-1 Ramsey Road, Shirley, NY 11967, USA

**Shipping** They are shipped out with dry ice/blue ice unless customers require otherwise.

## GENE INFORMATION

**Gene Name** [S100A9 S100 calcium binding protein A9 \[ Homo sapiens \(human\) \]](#)

**Official Symbol** [S100A9](#)

**Synonyms** S100A9; S100 calcium binding protein A9; CAGB, CFAG, S100 calcium binding protein A9 (calgranulin B), S100 calcium binding protein A9 (calgranulin B); protein S100-A9; 60B8AG; CGLB; LIAG; MAC387; MIF; MRP14; NIF; P14; MRP-14; calgranulin B; calgranulin-B; calprotectin L1H subunit; leukocyte L1 complex heavy chain; migration inhibitory factor-related protein 14; S100 calcium-binding protein A9 (calgranulin B); CAGB; CFAG; L1AG;

**Gene ID** [6280](#)

**mRNA Refseq** [NM\\_002965](#)

**Protein Refseq** [NP\\_002956](#)

**MIM** [123886](#)

**UniProt ID** [P06702](#)

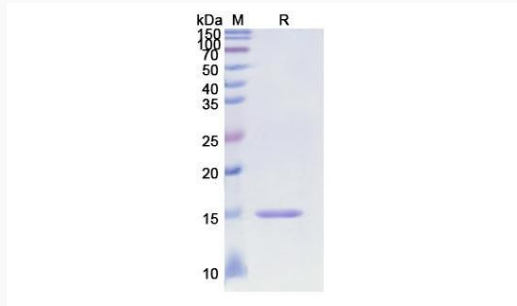
 Tel: 1-631-559-9269 1-516-512-3133

 Email: [info@creative-biomart.com](mailto:info@creative-biomart.com)  Fax: 1-631-938-8127

 45-1 Ramsey Road, Shirley, NY 11967, USA



SDS-PAGE



Tel: 1-631-559-9269 1-516-512-3133

Email: [info@creative-biomart.com](mailto:info@creative-biomart.com) Fax: 1-631-938-8127

45-1 Ramsey Road, Shirley, NY 11967, USA