

Recombinant Human S100B Protein, MYC/DDK-tagged, C13 and N15-labeled

Cat. No. S100B-042H **Lot. No.** (See product label)

SPECIFICATION

Product Overview

S100B MS Standard C13 and N15-labeled recombinant protein (NP_006263) with a C-terminal MYC/DDK tag, was expressed in HEK293 cells.

Species

Human

Source

HEK293

Description

The protein encoded by this gene is a member of the S100 family of proteins containing 2 EF-hand calcium-binding motifs. S100 proteins are localized in the cytoplasm and/or nucleus of a wide range of cells, and involved in the regulation of a number of cellular processes such as cell cycle progression and differentiation. S100 genes include at least 13 members which are located as a cluster on chromosome 1q21; however, this gene is located at 21q22.3. This protein may function in Neurite extension, proliferation of melanoma cells, stimulation of Ca²⁺ fluxes, inhibition of PKC-mediated phosphorylation, astrocytosis and axonal proliferation, and inhibition of microtubule assembly. Chromosomal rearrangements and altered expression of this gene have been implicated in several neurological, neoplastic, and other types of diseases, including Alzheimer's disease, Down's syndrome, epilepsy, amyotrophic lateral sclerosis, melanoma, and type I diabetes.

Molecular Mass

10.7 kDa

AA Sequence

MSELEKAMVALIDVFHQYSGREGDKHKLKSELKELINNELSHFLEEIKEQEVVDKV

 Tel: 1-631-559-9269 1-516-512-3133

 Email: info@creative-biomart.com  Fax: 1-631-938-8127

 45-1 Ramsey Road, Shirley, NY 11967, USA

METLDNDGDGECDFQEFMAFVAMVTTACHEFFEHETRTRPLEQKLISEEDLAANDIL
DYKDDDDKV

Purity > 80% as determined by SDS-PAGE and Coomassie blue staining

Stability Stable for 3 months from receipt of products under proper storage and handling conditions.

Storage Store at -80 centigrade. Avoid repeated freeze-thaw cycles.

Concentration 50 µg/mL as determined by BCA

Storage Buffer 100 mM glycine, 25 mM Tris-HCl, pH 7.3.

GENE INFORMATION

Gene Name S100B S100 calcium binding protein B [Homo sapiens (human)]

Official Symbol S100B

Synonyms S100B; S100 calcium binding protein B; NEF; S100; S100-B; S100beta; protein S100-B; S-100 calcium-binding protein, beta chain; S-100 protein subunit beta; S100 calcium-binding protein, beta (neural)

Gene ID 6285

mRNA Refseq NM_006272

Protein Refseq NP_006263

MIM 176990

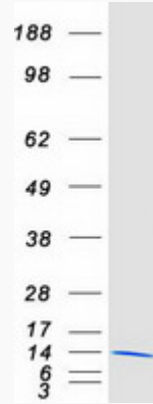
 Tel: 1-631-559-9269 1-516-512-3133

 Email: info@creative-biomart.com  Fax: 1-631-938-8127

 45-1 Ramsey Road, Shirley, NY 11967, USA

UniProt ID P04271

SDS-PAGE



 Tel: 1-631-559-9269 1-516-512-3133

 Email: info@creative-biomart.com  Fax: 1-631-938-8127

 45-1 Ramsey Road, Shirley, NY 11967, USA