

## Recombinant Human S100B protein(11-80 aa), C-His-tagged

Cat. No. S100B-2542H Lot. No. (See product label)

### SPECIFICATION

<b>Product Overview</b>	Recombinant Human S100B protein(P04271)(11-80 aa), fused with C-terminal His tag, was expressed in E. coli.
<b>Species</b>	Human
<b>Source</b>	E.coli
<b>ProteinLength</b>	11-80 aa
<b>Form</b>	0.15 M Phosphate buffered saline
<b>Molecular Mass</b>	10.5 kDa
<b>Storage</b>	Shipped on dry ice. Avoid repeated freeze-thaw cycles. Upon receipt, 2 days when stored at 2 to 8 °C after thawing. Up to 12 months when aliquoted and stored at -20 to -80°C.
<b>Reconstitution</b>	It is recommended that sterile water be added to the vial to prepare a stock solution of 0.2 ug/ul. Centrifuge the vial at 4°C before opening to recover the entire contents.
<b>AA Sequence</b>	LIDVFHQYSGREGDKHKLKSELKELINNELSHFLEEIKEQEVVDKVMETLDNDGDG ECDFQEFMAFVAM

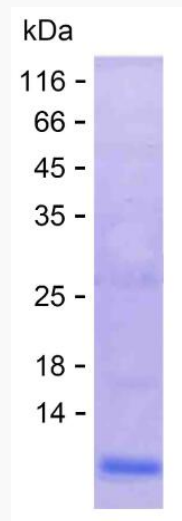
### GENE INFORMATION

 Tel: 1-631-559-9269 1-516-512-3133

 Email: [info@creative-biomart.com](mailto:info@creative-biomart.com)  Fax: 1-631-938-8127

 45-1 Ramsey Road, Shirley, NY 11967, USA

<b>Gene Name</b>	S100B S100 calcium binding protein B [ Homo sapiens ]
<b>Official Symbol</b>	S100B
<b>Synonyms</b>	S100B; S100 calcium binding protein B; S100 calcium binding protein, beta (neural); protein S100-B; S100beta; S-100 protein subunit beta; S-100 calcium-binding protein, beta chain; S100 calcium-binding protein, beta (neural); NEF; S100; S100-B;
<b>Gene ID</b>	6285
<b>mRNA Refseq</b>	NM_006272
<b>Protein Refseq</b>	NP_006263
<b>MIM</b>	176990
<b>UniProt ID</b>	P04271

**SDS-PAGE**


 Tel: 1-631-559-9269 1-516-512-3133

 Email: [info@creative-biomart.com](mailto:info@creative-biomart.com)  Fax: 1-631-938-8127

 45-1 Ramsey Road, Shirley, NY 11967, USA