

Recombinant Cattle S100B protein, His & GST-tagged

Cat. No. S100B-2578C Lot. No. (See product label)

SPECIFICATION

Product Overview	Recombinant Cattle S100B aa. (Met1~Glu92 (Accession # P02638)) fused with N-terminal His & GST tag was produced in E. coli cells.
Species	Cattle
Source	E.coli
ProteinLength	Met1~Glu92
Form	Freeze-dried powder
Molecular Mass	Predicted Molecular Mass: 43.1kDa
Endotoxin	<1.0EU per 1g (determined by the LAL method)
Purity	>95%
Characteristic	The isoelectric point is 5.5.
Applications	SDS-PAGE; WB; ELISA; IP
Stability	The thermal stability is described by the loss rate. The loss rate was determined by accelerated thermal degradation test, that is, incubate the protein at 37°C for 48h, and no obvious degradation and precipitation were observed. The loss rate is less than 5% within the expiration date under appropriate storage condition.

 Tel: 1-631-559-9269 1-516-512-3133

 Email: info@creative-biomart.com  Fax: 1-631-938-8127

 45-1 Ramsey Road, Shirley, NY 11967, USA

Storage	Avoid repeated freeze/thaw cycles. Store at 2-8°C for one month. Aliquot and store at -80°C for 12 months.
Storage buffer	Supplied as lyophilized form in PBS, pH7.4, containing 5% trehalose, 0.01% sarcosyl.
Reconstitution	Reconstitute in sterile PBS, pH7.2-pH7.4

GENE INFORMATION

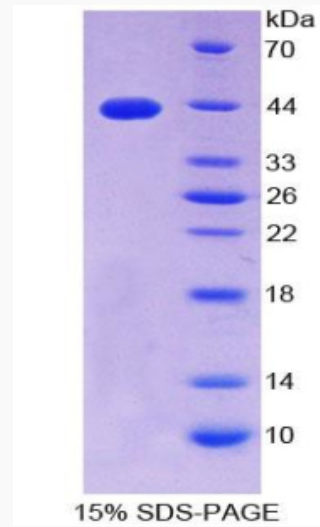
Gene Name	S100B S100 calcium binding protein B [Bos taurus (cattle)]
Official Symbol	S100B
Synonyms	S100B; protein S100-B; S-100 protein beta chain; S-100 protein subunit beta; S100 protein, beta polypeptide
Gene ID	525716
mRNA Refseq	NM_001034555.3
Protein Refseq	NP_001029727.1
UniProt ID	P02638

 Tel: 1-631-559-9269 1-516-512-3133

 Email: info@creative-biomart.com  Fax: 1-631-938-8127

 45-1 Ramsey Road, Shirley, NY 11967, USA

SDS-PAGE



 Tel: 1-631-559-9269 1-516-512-3133

 Email: info@creative-biomart.com  Fax: 1-631-938-8127

 45-1 Ramsey Road, Shirley, NY 11967, USA