

Active Recombinant Human S100B protein, His-tagged

Cat. No. S100B-31010TH Lot. No. (See product label)

SPECIFICATION

Product Overview	Active Recombinant Human S100B protein(NP_006263.1) (Ser 2-Glu 92) was expressed in E.coli, fused with a polyhistidine tag at the N-terminus.
Species	Human
Source	E.coli
ProteinLength	2-92 aa
Form	Lyophilized from sterile PBS, 10% glycerol, pH 7.5.
Bio-activity	1. Measured by its ability to bind human AGER in a functional ELISA. 2. Measured by its ability to bind TP53 in a functional ELISA.
Molecular Mass	The recombinant human S100B consisting of 102 amino acids and migrates as an approximately 12 kDa band in SDS-PAGE under reducing conditions as predicted.
Purity	> 90 % as determined by SDS-PAGE
Storage	Store it under sterile conditions at -20°C to -80°C upon receiving. Recommend to aliquot the protein into smaller quantities for optimal storage. Avoid repeated freeze-thaw cycles.
Reconstitution	It is recommended that sterile water be added to the vial to prepare a stock solution of 0.2 ug/ul. Centrifuge the vial at 4°C before opening to recover the entire contents.

 Tel: 1-631-559-9269 1-516-512-3133

 Email: info@creative-biomart.com  Fax: 1-631-938-8127

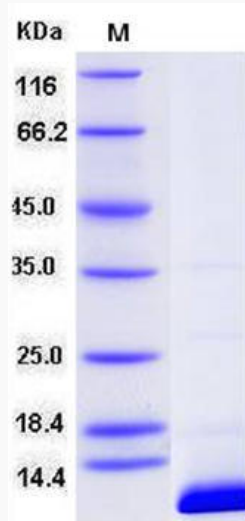
 45-1 Ramsey Road, Shirley, NY 11967, USA

GENE INFORMATION

Gene Name	S100B S100 calcium binding protein B [Homo sapiens]
Official Symbol	S100B
Synonyms	S100B; S100 calcium binding protein B; S100 calcium binding protein, beta (neural); protein S100-B; S100beta; S-100 protein subunit beta; S-100 calcium-binding protein, beta chain; S100 calcium-binding protein, beta (neural); NEF; S100; S100-B;
Gene ID	6285
mRNA Refseq	NM_006272
Protein Refseq	NP_006263
MIM	176990
UniProt ID	P04271

 Tel: 1-631-559-9269 1-516-512-3133 Email: info@creative-biomart.com  Fax: 1-631-938-8127 45-1 Ramsey Road, Shirley, NY 11967, USA

SDS-PAGE



 Tel: 1-631-559-9269 1-516-512-3133

 Email: info@creative-biomart.com  Fax: 1-631-938-8127

 45-1 Ramsey Road, Shirley, NY 11967, USA