

Active Recombinant Human S100B protein, hFc-tagged

Cat. No. S100B-68H Lot. No. (See product label)

SPECIFICATION

Product Overview	Active Recombinant Human S100B protein(NP_006263.1) (Ser 2-Glu 92) was expressed in HEK293 with the fused Fc region of human IgG1 at the N-terminus.
Species	Human
Source	HEK293
ProteinLength	2-92 aa
Form	Lyophilized from sterile PBS, pH 7.4.
Bio-activity	1. Measured by its ability to bind mouse S100A1 in a functional ELISA. 2. Measured by its ability to bind TP53 in a functional ELISA. 3. Immobilized recombinant human Fc-S100B at 10 µg/mL (100 µl/well) can bind biotinylated human S100A1 with a linear range of 15.6-250 ng/mL.
Molecular Mass	The recombinant human Fc/S100B is a disulfide-linked homodimeric protein. The reduced monomer consists of 328 amino acids and has a predicted molecular mass of 37.2 kDa. As a result of glycosylation, the apparent molecular mass of rhFc/S100B monomer is approximately 40 kDa in SDS-PAGE under reducing conditions.
Endotoxin	< 1.0 EU per µg of the protein as determined by the LAL method.
Purity	> 95 % as determined by SDS-PAGE

 Tel: 1-631-559-9269 1-516-512-3133

 Email: info@creative-biomart.com  Fax: 1-631-938-8127

 45-1 Ramsey Road, Shirley, NY 11967, USA

Storage Store it under sterile conditions at -20°C to -80°C upon receiving. Recommend to aliquot the protein into smaller quantities for optimal storage. Avoid repeated freeze-thaw cycles.

Reconstitution It is recommended that sterile water be added to the vial to prepare a stock solution of 0.2 ug/ul. Centrifuge the vial at 4°C before opening to recover the entire contents.

GENE INFORMATION

Gene Name [S100B S100 calcium binding protein B \[Homo sapiens \]](#)

Official Symbol [S100B](#)

Synonyms S100B; S100 calcium binding protein B; S100 calcium binding protein, beta (neural); protein S100-B; S100beta; S-100 protein subunit beta; S-100 calcium-binding protein, beta chain; S100 calcium-binding protein, beta (neural); NEF; S100; S100-B;

Gene ID [6285](#)

mRNA Refseq [NM_006272](#)

Protein Refseq [NP_006263](#)

MIM [176990](#)

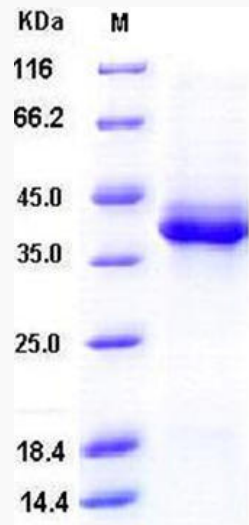
UniProt ID [P04271](#)

 Tel: 1-631-559-9269 1-516-512-3133

 Email: info@creative-biomart.com  Fax: 1-631-938-8127

 45-1 Ramsey Road, Shirley, NY 11967, USA

SDS-PAGE



 Tel: 1-631-559-9269 1-516-512-3133

 Email: info@creative-biomart.com  Fax: 1-631-938-8127

 45-1 Ramsey Road, Shirley, NY 11967, USA