

Recombinant Full Length Human S100B protein, His-tagged

Cat. No. S100B-7016H Lot. No. (See product label)

SPECIFICATION

Product Overview	Recombinant Human S100B (Met1-Glu92) protein was fused to His-tag at N-terminus and expressed in E.coli.
Species	Human
Source	E.coli
ProteinLength	Met1-Glu92
Description	<p>S-100 protein beta chain (S100B), a member of the S-100 family, is also known as S-100 protein subunit beta and S100 calcium-binding protein B, which contains two EF-hand domains. S100B can weakly bind calcium but bind zinc very tightly-distinct binding sites with different affinities exist for both ions on each monomer. Also, S100B can bind to and initiate the activation of STK38 by releasing autoinhibitory intramolecular interactions within the kinase. Interaction with AGER after myocardial infarction, S100B may play a role in myocyte apoptosis by activating ERK1/2 and p53/TP53 signaling. Furthermore, S100B could assist ATAD3A cytoplasmic processing, preventing aggregation and favoring mitochondrial localization. S100B may mediate calcium-dependent regulation on many physiological processes by interacting with other proteins, such as TPR-containing proteins, and modulating their activity.</p>
Predicted N Terminal	Met1
Form	Lyophilized from 0.22

 Tel: 1-631-559-9269 1-516-512-3133

 Email: info@creative-biomart.com  Fax: 1-631-938-8127

 45-1 Ramsey Road, Shirley, NY 11967, USA

	µm filtered solution in 50 mM Tris, 150 mM NaCl, pH 8.0, 10% trehalose.
Molecular Mass	The protein has a calculated MW of 11.5 kDa. The protein migrates as 11 kDa under reducing (R) condition (SDS-PAGE).
Endotoxin	Less than 1.0 EU per µg by the LAL method.
Purity	>95% as determined by SDS-PAGE.
Storage	<p>For long term storage, the product should be stored at lyophilized state at -20 centigrade or lower.</p> <p>Please avoid repeated freeze-thaw cycles.</p> <p>This product is stable after storage at:</p> <p>-20 to -70 centigrade for 12 months in lyophilized state;</p> <p>-70 centigrade for 3 months under sterile conditions after reconstitution.</p>
Reconstitution	It is recommended that sterile water be added to the vial to prepare a stock solution of 0.2 ug/ul. Centrifuge the vial at 4°C before opening to recover the entire contents.
GENE INFORMATION	
Gene Name	S100B
Official Symbol	S100B
Synonyms	S100B; S100 calcium binding protein B; S100 calcium binding protein, beta (neural); protein S100-B; S100beta; S-100 protein subunit beta; S-100 calcium-binding protein, beta chain; S100 calcium-binding protein, beta (neural); NEF; S100; S100-B
Gene ID	6285

 Tel: 1-631-559-9269 1-516-512-3133

 Email: info@creative-biomart.com  Fax: 1-631-938-8127

 45-1 Ramsey Road, Shirley, NY 11967, USA

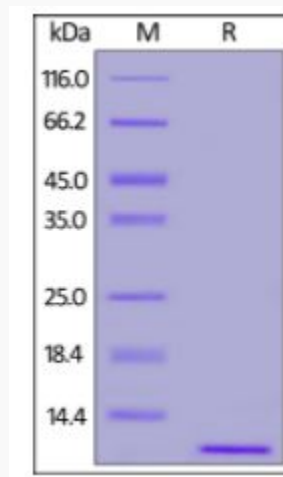
mRNA Refseq [NM_006272](#)

Protein Refseq [NP_006263](#)

MIM [176990](#)

UniProt ID [P04271](#)

SDS-PAGE of S100B-7016H



Human S100B, His Tag on SDS-PAGE under reducing (R) condition. The gel was stained overnight with Coomassie Blue. The purity of the protein is greater than 95%.

 Tel: 1-631-559-9269 1-516-512-3133

 Email: info@creative-biomart.com  Fax: 1-631-938-8127

 45-1 Ramsey Road, Shirley, NY 11967, USA