

Recombinant Human S100P Protein, Myc/DDK-tagged, C13 and N15-labeled

Cat. No. S100P-3900H Lot. No. (See product label)

SPECIFICATION

Product Overview	S100P MS Standard C13 and N15-labeled recombinant protein (NP_005971) with a C-terminal MYC/DDK tag, was expressed in HEK293 cells.
Species	Human
Source	HEK293
Description	The protein encoded by this gene is a member of the S100 family of proteins containing 2 EF-hand calcium-binding motifs. S100 proteins are localized in the cytoplasm and/or nucleus of a wide range of cells, and involved in the regulation of a number of cellular processes such as cell cycle progression and differentiation. S100 genes include at least 13 members which are located as a cluster on chromosome 1q21; however, this gene is located at 4p16. This protein, in addition to binding Ca ²⁺ , also binds Zn ²⁺ and Mg ²⁺ . This protein may play a role in the etiology of prostate cancer.
Molecular Mass	10.4 kDa
AA Sequence	MTELETAMGMIIDVFSRYSGSEGSTQTLTKGELKVLMEKELPGFLQSGKDKDAVDKL LKDL DANGDAQVDFSEFIVFVAITSACHKYFEKAGLKTRTRPLEQKLISEEDLAANDI LDYKDDDDKV
Purity	> 80% as determined by SDS-PAGE and Coomassie blue staining

 Tel: 1-631-559-9269 1-516-512-3133

 Email: info@creative-biomart.com  Fax: 1-631-938-8127

 45-1 Ramsey Road, Shirley, NY 11967, USA

Stability	Stable for 3 months from receipt of products under proper storage and handling conditions.
Storage	Store at -80 centigrade. Avoid repeated freeze-thaw cycles.
Concentration	50 µg/mL as determined by BCA
Storage Buffer	100 mM glycine, 25 mM Tris-HCl, pH 7.3.

GENE INFORMATION

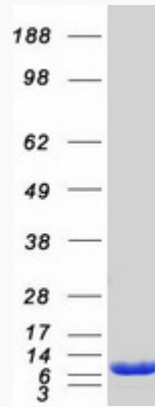
Gene Name	S100P S100 calcium binding protein P [Homo sapiens (human)]
Official Symbol	S100P
Synonyms	S100P; S100 calcium binding protein P; protein S100-P; protein S100-E; migration-inducing gene 9; S100 calcium-binding protein P; MIG9;
Gene ID	6286
mRNA Refseq	NM_005980
Protein Refseq	NP_005971
MIM	600614
UniProt ID	P25815

 Tel: 1-631-559-9269 1-516-512-3133

 Email: info@creative-biomart.com  Fax: 1-631-938-8127

 45-1 Ramsey Road, Shirley, NY 11967, USA

SDS-PAGE



 Tel: 1-631-559-9269 1-516-512-3133

 Email: info@creative-biomart.com  Fax: 1-631-938-8127

 45-1 Ramsey Road, Shirley, NY 11967, USA