

## Active Recombinant Rat S100A1 protein, His-tagged

**Cat. No.** S100a1-556R    **Lot. No.** (See product label)

### SPECIFICATION

<b>Product Overview</b>	Active Recombinant Rat S100A1 protein(P35467)(1~94 aa), fused with N-terminal His tag, was expressed in E.coli.
<b>Species</b>	Rat
<b>Source</b>	E.coli
<b>ProteinLength</b>	1-94 aa
<b>Form</b>	Lyophilized from sterile PBS, pH7.4, containing 0.01% SKL, 1mM DTT, 5% Trehalose and Proclin300.
<b>Bio-activity</b>	<p>Small calcium binding protein that S100 Calcium Binding Protein (S100), also known as S100 Alpha (S100A1), is a member of the S100 family of calcium-binding proteins. As with most S100 proteins, S100A1 proteins are localized in the cytoplasm and/or nucleus of a wide range of cells, and it possess a variety of intracellular and extracellular functions. They interact with multiple receptors and signal transducers to regulate pathways that govern inflammation, cell differentiation, proliferation, energy metabolism, apoptosis, calcium homeostasis, cell cytoskeleton and microbial resistance. S100 Calcium Binding Protein A4 (S100A4) is one of targets of S100A1. Thus a functional binding ELISA assay was conducted to detect the interaction of recombinant rat S100A1 and recombinant mouse S100A4. Briefly, S100A1 was diluted serially in PBS with 0.01% BSA (pH 7.4). Duplicate samples of 100 µl were then transferred to S100A4-coated microtiter wells and incubated for 1h at 37°C.</p>

 Tel: 1-631-559-9269    1-516-512-3133

 Email: [info@creative-biomart.com](mailto:info@creative-biomart.com)     Fax: 1-631-938-8127

 45-1 Ramsey Road, Shirley, NY 11967, USA

Wells were washed with PBST and incubated for 1h with anti-S100A1 pAb, then aspirated and washed 3 times. After incubation with HRP labelled secondary antibody for 1h at 37°C, wells were aspirated and washed 5 times. With the addition of substrate solution, wells were incubated 15-25 minutes at 37°C. Finally, add 50 µ stop solution to the wells and read at 450/630 nm immediately. The binding activity of recombinant rat S100A1 and recombinant mouse S100A4 was shown, the EC50 for this effect is 3.92 ug/mL.

<b>Molecular Mass</b>	14.2kDa
<b>Endotoxin</b>	<1.0EU per 1µg (determined by the LAL method).
<b>Purity</b>	> 90% as determined by SDS-PAGE.
<b>Storage</b>	Avoid repeated freeze/thaw cycles. Store at -20°C for 12 months. Aliquot and store at -80°C for 12 months.
<b>Reconstitution</b>	Reconstitute in 10mM PBS (pH7.4) to a concentration of 0.1-1.0 mg/mL. Do not vortex.

## GENE INFORMATION

<b>Gene Name</b>	S100a1 S100 calcium binding protein A1 [ <i>Rattus norvegicus</i> ]
<b>Official Symbol</b>	S100A1
<b>Synonyms</b>	S100A1; S100 calcium binding protein A1; protein S100-A1; S-100 protein alpha chain; S-100 protein subunit alpha; S100 calcium-binding protein A1;
<b>Gene ID</b>	295214

 Tel: 1-631-559-9269 1-516-512-3133

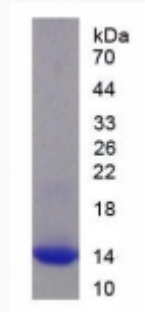
 Email: [info@creative-biomart.com](mailto:info@creative-biomart.com)  Fax: 1-631-938-8127

 45-1 Ramsey Road, Shirley, NY 11967, USA

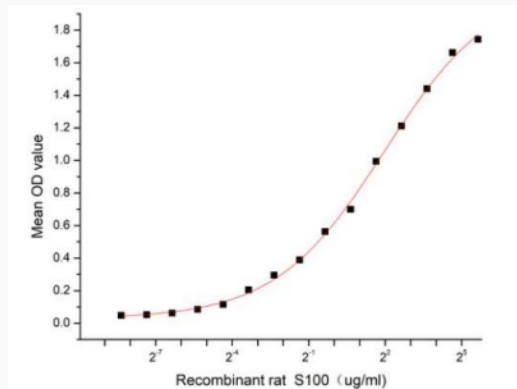
mRNA Refseq [NM\\_001007636](#)

Protein Refseq [NP\\_001007637](#)

**SDS-PAGE**



**Activity**



 Tel: 1-631-559-9269 1-516-512-3133

 Email: [info@creative-biomart.com](mailto:info@creative-biomart.com)  Fax: 1-631-938-8127

 45-1 Ramsey Road, Shirley, NY 11967, USA