

Recombinant Mouse S100a10 Protein, His/GST-tagged

Cat. No. S100a10-165M Lot. No. (See product label)

SPECIFICATION

Product Overview	Recombinant Mouse S100a10(Pro2~Lys97) fused with His/GST tag at N-terminal was expressed in E. coli.
Species	Mouse
Source	E.coli
ProteinLength	Pro2~Lys97
Form	PBS, pH7.4, containing 0.01% SKL, 1mM DTT, 5% Trehalose and Proclin300.
Molecular Mass	41.1kDa
Endotoxin	<1.0EU per 1ug (determined by the LAL method)
Purity	> 95%
Applications	Positive Control; Immunogen; SDS-PAGE; WB. If bio-activity of the protein is needed, please check active protein
Stability	The thermal stability is described by the loss rate. The loss rate was determined by accelerated thermal degradation test, that is, incubate the protein at 37 centigrade for 48h, and no obvious degradation and precipitation were observed. The loss rate is less than 5% within the expiration date under appropriate storage condition.

 Tel: 1-631-559-9269 1-516-512-3133

 Email: info@creative-biomart.com  Fax: 1-631-938-8127

 45-1 Ramsey Road, Shirley, NY 11967, USA

Storage	Avoid repeated freeze/thaw cycles. Store at 2-8 centigrade for one month. Aliquot and store at -80 centigrade for 12 months.
----------------	--

Reconstitution	Reconstitute in PBS or others
-----------------------	-------------------------------

GENE INFORMATION

Gene Name	S100a10 S100 calcium binding protein A10 (calpactin) [Mus musculus]
------------------	---

Official Symbol	S100a10
------------------------	---------

Synonyms	S100A10; S100 calcium binding protein A10 (calpactin); protein S100-A10; calpactin I light chain; calpactin-1 light chain; cellular ligand of annexin II; S100 calcium-binding protein A10; calcium binding protein A11 (calgizzarin); S100 calcium binding protein A10 (calgizzarin); 42C; p10; p11; CAL12; CLP11; Cal1I; AA409961; AL024248;
-----------------	--

Gene ID	20194
----------------	-------

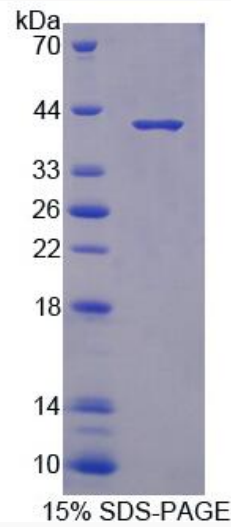
mRNA Refseq	NM_009112
--------------------	-----------

Protein Refseq	NP_033138
-----------------------	-----------

 Tel: 1-631-559-9269 1-516-512-3133

 Email: info@creative-biomart.com  Fax: 1-631-938-8127

 45-1 Ramsey Road, Shirley, NY 11967, USA



Tel: 1-631-559-9269 1-516-512-3133

Email: info@creative-biomart.com Fax: 1-631-938-8127

45-1 Ramsey Road, Shirley, NY 11967, USA