

Recombinant Mouse S100 Calcium Binding Protein A6 (Calcyclin)

Cat. No. S100a6-845M Lot. No. (See product label)

SPECIFICATION

Product Overview

Recombinant Mouse S100a6 encoding the mouse S100A6 (NP_035443.1) (Met1-Lys89) was expressed in *HEK293*.

Species

Mouse

Source

HEK293

ProteinLength

1-89 a.a.

Description

S100 protein is a family of low molecular weight protein found in vertebrates characterized by two EF-hand calcium-binding motifs. There are at least 21 different S100 proteins, and the name is derived from the fact that the protein is 100% soluble in ammonium sulfate at neutral pH. Most S100 proteins are disulfide-linked homodimer, and is normally present in cells derived from the neural crest, chondrocytes, macrophages, dendritic cells, etc. S100 proteins have been implicated in a variety of intracellular and extracellular functions. They are involved in regulation of protein phosphorylation, transcription factors, the dynamics of cytoskeleton constituents, enzyme activities, cell growth and differentiation, and the inflammatory response. S100A6 (S100calciumbindingproteinA6) is a member of the S100 family of proteins, and functions in stimulation of Ca²⁺-dependent insulin release, prolactin secretion, and exocytosis. Chromosomal rearrangements and altered expression of S100A6 have been implicated in melanoma. Mouse S100A6 is 99% and 96% aa identical to rat and human S100A6, respectively, and exists as monomer or disulfide-

 Tel: 1-631-559-9269 1-516-512-3133

 Email: info@creative-biomart.com  Fax: 1-631-938-8127

 45-1 Ramsey Road, Shirley, NY 11967, USA

	linked dimers.
Molecular Mass	The recombinant mouse S100A6 consisting of 89 amino acids and has a calculated molecular mass of 10 kDa as estimated in SDS-PAGE under reducing conditions.
Predicted N Terminal	Met.
Endotoxin	< 1.0 EU per 1µg cytokine as determined by the LAL method.
Formulation	Supplied as a 0.2µm filtered solution of PBS, pH7.4.
Reconstitution	Follow the instructions on the vial. Centrifuge the vial at 4°C before opening to recover the entire contents.
Purity	> 98%, as determined by SDS-PAGE.
Stability	Samples are stable for up to twelve months from date of receipt -70°C.
Storage	Store it under sterile conditions at -70°C. It is recommended that the protein be aliquoted and be used as soon as possible. Avoid repeated freeze-thaw cycles.

GENE INFORMATION

Gene Name	S100a6 S100 calcium binding protein A6 (calcyclin) [Mus musculus]
Synonyms	S100a6; S100 calcium binding protein A6 (calcyclin); 2A9; PRA; 5B10; Cacy; CALCYCLIN; calcium binding protein A6 (calcyclin)
Gene ID	20200
mRNA Refseq	NM_011313

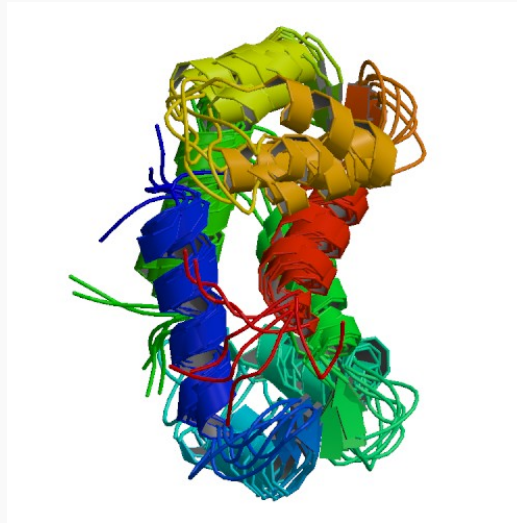
 Tel: 1-631-559-9269 1-516-512-3133

 Email: info@creative-biomart.com  Fax: 1-631-938-8127

 45-1 Ramsey Road, Shirley, NY 11967, USA

Protein Refseq	NP_035443
UniProt ID	P14069
Chromosome Location	43.6 cM
Function	calcium ion binding; protein binding; zinc ion binding

PDB rendering based on 1a03.



 Tel: 1-631-559-9269 1-516-512-3133

 Email: info@creative-biomart.com  Fax: 1-631-938-8127

 45-1 Ramsey Road, Shirley, NY 11967, USA