

Recombinant Rat S100a8 protein, His & T7-tagged

Cat. No. S100a8-1803R Lot. No. (See product label)

SPECIFICATION

Product Overview	Recombinant Rat S100a8 aa. (Met1~Glu89 (Accession # P50115)) fused with N-terminal His & T7 tag was produced in E. coli cells.
Species	Rat
Source	E.coli
ProteinLength	Met1~Glu89
Description	May play a role in inflammatory response.
Form	Freeze-dried powder
Molecular Mass	Predicted Molecular Mass: 13.9kDa.
Endotoxin	<1.0EU per 1ug (determined by the LAL method)
Purity	>90%
Characteristic	The isoelectric point is 5.7.
Applications	SDS-PAGE; WB; ELISA; IP.
Stability	The thermal stability is described by the loss rate of the target protein. The loss rate was determined by accelerated thermal degradation test, that is, incubate the protein

 Tel: 1-631-559-9269 1-516-512-3133

 Email: info@creative-biomart.com  Fax: 1-631-938-8127

 45-1 Ramsey Road, Shirley, NY 11967, USA

at 37°C for 48h, and no obvious degradation and precipitation were observed. (Referring from China Biological Products Standard, which was calculated by the Arrhenius equation.) The loss of this protein is less than 5% within the expiration date under appropriate storage condition.

Storage	Avoid repeated freeze/thaw cycles. Store at 2-8°C for one month. Aliquot and store at -80°C for 12 months.
Storage Buffer	Supplied as lyophilized form in 20mM Tris, 150mM NaCl, pH8.0, containing 1mM EDTA, 1mM DTT, 0.01% sarcosyl, 5% trehalose, and preservative.
Reconstitution	Reconstitute in sterile ddH ₂ O.

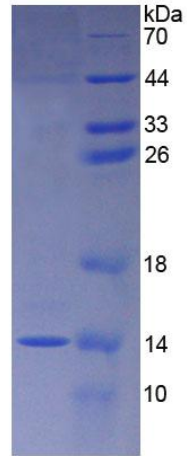
GENE INFORMATION

Gene Name	S100a8 S100 calcium binding protein A8 [<i>Rattus norvegicus</i> (Norway rat)]
Official Symbol	S100a8
Synonyms	S100A14; S100 calcium binding protein A14; BCMP84; S100A15; protein S100-A14; S114; breast cancer membrane protein 84
Gene ID	116547
mRNA Refseq	NM_053822.2
Protein Refseq	NP_446274.2
UniProt ID	P50115

 Tel: 1-631-559-9269 1-516-512-3133

 Email: info@creative-biomart.com  Fax: 1-631-938-8127

 45-1 Ramsey Road, Shirley, NY 11967, USA



15% SDS-PAGE

SDS-PAGE

Tel: 1-631-559-9269 1-516-512-3133

Email: info@creative-biomart.com Fax: 1-631-938-8127

45-1 Ramsey Road, Shirley, NY 11967, USA