

Recombinant Rat S100a9 protein, His-tagged

Cat. No. S100a9-1806R Lot. No. (See product label)

SPECIFICATION

Product Overview	Recombinant Rat S100a9 aa. (Met1~Lys113 (Accession # P50116)) fused with N-terminal His tag was produced in E. coli cells.
Species	Rat
Source	E.coli
ProteinLength	Met1~Lys113
Description	Calcium binding protein that may be associated with acute inflammatory processes.
Form	Freeze-dried powder
Molecular Mass	Predicted Molecular Mass: 14.4kDa.
Endotoxin	<1.0EU per 1ug (determined by the LAL method)
Purity	>95%
Characteristic	The isoelectric point is 7.2.
Applications	SDS-PAGE; WB; ELISA; IP.
Stability	The thermal stability is described by the loss rate of the target protein. The loss rate was determined by accelerated thermal degradation test, that is, incubate the protein

 Tel: 1-631-559-9269 1-516-512-3133

 Email: info@creative-biomart.com  Fax: 1-631-938-8127

 45-1 Ramsey Road, Shirley, NY 11967, USA

at 37°C for 48h, and no obvious degradation and precipitation were observed. (Referring from China Biological Products Standard, which was calculated by the Arrhenius equation.) The loss of this protein is less than 5% within the expiration date under appropriate storage condition.

Storage	Avoid repeated freeze/thaw cycles. Store at 2-8°C for one month. Aliquot and store at -80°C for 12 months.
Storage Buffer	Supplied as lyophilized form in PBS, pH7.4, containing 5% trehalose, 0.01% sarcosyl.
Reconstitution	Reconstitute in sterile PBS, pH7.2-pH7.4.

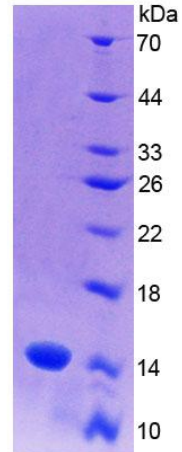
GENE INFORMATION

Gene Name	S100a9 S100 calcium binding protein A9 [<i>Rattus norvegicus</i> (Norway rat)]
Official Symbol	S100a9
Synonyms	Naglu; alpha-N-acetylglucosaminidase (Sanfilippo disease IIIB); alpha-N-acetylglucosaminidase; N-acetyl-glucosaminidase; alpha-N-acetylglucosaminidase, lysosomal
Gene ID	94195
mRNA Refseq	NM_053587.1
Protein Refseq	NP_446039.1
UniProt ID	P50116

 Tel: 1-631-559-9269 1-516-512-3133

 Email: info@creative-biomart.com  Fax: 1-631-938-8127

 45-1 Ramsey Road, Shirley, NY 11967, USA



15% SDS-PAGE

SDS-PAGE

Tel: 1-631-559-9269 1-516-512-3133

Email: info@creative-biomart.com Fax: 1-631-938-8127

45-1 Ramsey Road, Shirley, NY 11967, USA