

Recombinant Rat S100b protein, His-tagged

Cat. No. S100b-566R Lot. No. (See product label)

SPECIFICATION

Product Overview	Recombinant Rat S100b (P04631) aa. (Met1~Glu92) fused with His tag was produced in E. coli cells.
Species	Rat
Source	E.coli
ProteinLength	Met1~Glu92
Description	This protein binds GTPase activating protein IQGAP1; may play a role in cell membrane rearrangement.
Form	Freeze-dried powder
Molecular Mass	Predicted Molecular Mass: 12kDa; Accurate Molecular Mass: 12kDa as determined by SDS-PAGE reducing conditions.
Purity	>95%
Characteristic	Isoelectric point is 4.9.
Applications	Cell culture; Activity Assays; In vivo assays.
Stability	The thermal stability is described by the loss rate. The loss rate was determined by accelerated thermal degradation test, that is, incubate the protein at 37°C for 48h,

 Tel: 1-631-559-9269 1-516-512-3133

 Email: info@creative-biomart.com  Fax: 1-631-938-8127

 45-1 Ramsey Road, Shirley, NY 11967, USA

and no obvious degradation and precipitation were observed. The loss rate is less than 5% within the expiration date under appropriate storage condition.

Storage

Avoid repeated freeze/thaw cycles. Store at 2-8°C for one month. Aliquot and store at -80°C for 12 months.

Storage buffer

20mM Tris, 150mM NaCl, pH8.0, containing 1mM EDTA, 1mM DTT, 0.01% sarcosyl, 5% Trehalose and Proclin300.

Reconstitution

Reconstitute in 20mM Tris, 150mM NaCl (pH8.0) to a concentration of 0.1-1.0 mg/mL. Do not vortex

GENE INFORMATION

Gene Name

S100b S100 calcium binding protein B [*Rattus norvegicus* (Norway rat)]

Official Symbol

S100b

Synonyms

S100b; S100 calcium binding protein B; S100P; protein S100-B; S-100 protein beta chain; S-100 protein subunit beta; S100 calcium-binding protein, beta (neural); S100 protein, beta polypeptide, neural

Gene ID

25742

mRNA Refseq

NM_013191.1

Protein Refseq

NP_037323.1

UniProt ID

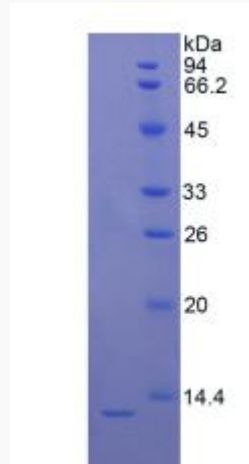
P04631

 Tel: 1-631-559-9269 1-516-512-3133

 Email: info@creative-biomart.com  Fax: 1-631-938-8127

 45-1 Ramsey Road, Shirley, NY 11967, USA

SDS-PAGE



 Tel: 1-631-559-9269 1-516-512-3133

 Email: info@creative-biomart.com  Fax: 1-631-938-8127

 45-1 Ramsey Road, Shirley, NY 11967, USA