

Recombinant Human S1PR3 Protein, GST-tagged

Cat. No. S1PR3-4040H Lot. No. (See product label)

SPECIFICATION

Product Overview	Human EDG3 full-length ORF (NP_005217.2, 1 a.a. - 378 a.a.) recombinant protein with GST-tag at N-terminal.
Species	Human
Source	Wheat Germ
Description	This gene encodes a member of the EDG family of receptors, which are G protein-coupled receptors. This protein has been identified as a functional receptor for sphingosine 1-phosphate and likely contributes to the regulation of angiogenesis and vascular endothelial cell function. [provided by RefSeq, Jul 2008]
Molecular Mass	68.7 kDa
AA Sequence	MATALPPRLQPVRGNETLREHYQYVGKLAGRLKEASEGSTLTTVFLVICSFIVLENL MVLIAIWKNNKFHNRMYFFIGNLALCDLLAGIAYKVNILMSGKKTFSLSPTVWFLREG SMFVALGASTCSLLAIAIERHLTMIKMRPYDANKRHRVFLIGMCWLIAFTLGALPILG WNCLHNLPCDSTILPLYSKKYIAFCISIFTAILVTIVILYARIYFLVKSSSRKVANHHNNE RSMALLRTVVIVVSVFIACWSPFLFILFDVACRVQACPIKFAQWFIVLAVLNSAMNP VIYTLASKEMRRAFFRLVCNCLVRGRGARASPIQPALDPSRSKSSSSNNSHSPKVK EDLPHTAPSSCIMDKNAALQNGIFCN
Applications	Enzyme-linked Immunoabsorbent Assay Western Blot (Recombinant protein) Antibody Production

 Tel: 1-631-559-9269 1-516-512-3133

 Email: info@creative-biomart.com  Fax: 1-631-938-8127

 45-1 Ramsey Road, Shirley, NY 11967, USA

Protein Array

Notes	Best use within three months from the date of receipt of this protein.
Storage	Store at -80 centigrade. Aliquot to avoid repeated freezing and thawing.
Storage Buffer	50 mM Tris-HCl, 10 mM reduced Glutathione, pH=8.0 in the elution buffer.

GENE INFORMATION

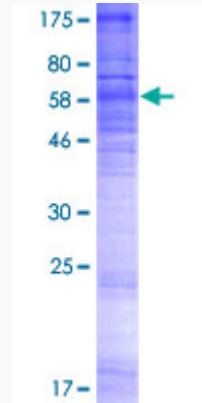
Gene Name	S1PR3 sphingosine-1-phosphate receptor 3 [Homo sapiens]
Official Symbol	S1PR3
Synonyms	S1PR3; sphingosine-1-phosphate receptor 3; EDG3, endothelial differentiation, sphingolipid G protein coupled receptor, 3; sphingosine 1-phosphate receptor 3; EDG 3; sphingosine 1 phosphate receptor 3; S1P receptor 3; S1P receptor EDG3; S1P receptor Edg-3; sphingosine 1-phosphate receptor Edg-3; endothelial differentiation G-protein coupled receptor 3; G protein-coupled receptor, endothelial differentiation gene-3; endothelial differentiation, sphingolipid G-protein-coupled receptor, 3; EDG3; LPB3; S1P3; EDG-3; FLJ37523; FLJ93220; MGC71696;
Gene ID	1903
mRNA Refseq	NM_005226
Protein Refseq	NP_005217
MIM	601965
UniProt ID	Q99500

 Tel: 1-631-559-9269 1-516-512-3133

 Email: info@creative-biomart.com  Fax: 1-631-938-8127

 45-1 Ramsey Road, Shirley, NY 11967, USA

**Quality Control
Testing**



12.5% SDS-PAGE Stained with Coomassie Blue.

 Tel: 1-631-559-9269 1-516-512-3133

 Email: info@creative-biomart.com  Fax: 1-631-938-8127

 45-1 Ramsey Road, Shirley, NY 11967, USA