

Recombinant Horse SAA1 Protein (1-110 aa), His-tagged

Cat. No. SAA1-2345H Lot. No. (See product label)

SPECIFICATION

Product Overview	Recombinant Horse SAA1 Protein (1-110 aa) is produced by Yeast expression system. This protein is fused with a 6xHis tag at the N-terminal. Protein Description: Full Length.
Species	Horse
Source	Yeast
ProteinLength	1-110 aa
Description	Major acute phase reactant. Apolipoprotein of the HDL complex.
Form	Tris-based buffer,50% glycerol
Molecular Mass	14.3 kDa
AA Sequence	LLSFLGEAARGTWDMIRAYNDMREANYIGADKYFHARGNYDAAKRGPGGAWAAKV ISDARENFQRFTDRFSFGGSGRGAEDSRADQAANEWGRSGKDPNHFRPHGLPDK Y
Purity	> 90% as determined by SDS-PAGE.
Notes	Repeated freezing and thawing is not recommended. Store working aliquots at 4 centigrade for up to one week.

 Tel: 1-631-559-9269 1-516-512-3133

 Email: info@creative-biomart.com  Fax: 1-631-938-8127

 45-1 Ramsey Road, Shirley, NY 11967, USA

Storage The shelf life is related to many factors, storage state, buffer ingredients, storage temperature and the stability of the protein itself. Generally, the shelf life of liquid form is 6 months at -20 centigrade/-80 centigrade. The shelf life of lyophilized form is 12 months at -20 centigrade/-80 centigrade.

Concentration A hardcopy of COA will be sent along with the products. Please refer to it for detailed information.

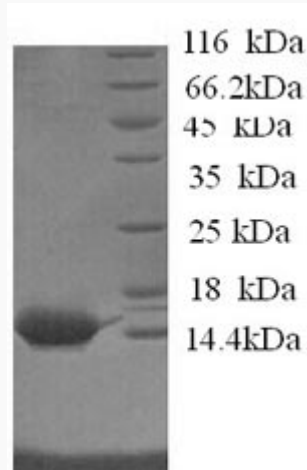
GENE INFORMATION

Gene Name	SAA1 serum amyloid A1 [Equus caballus]
Official Symbol	SAA1
Synonyms	SAA1; serum amyloid A1; serum amyloid A protein; SAA;
Gene ID	100034017
mRNA Refseq	NM_001163892
Protein Refseq	NP_001157364
UniProt ID	P19857

 Tel: 1-631-559-9269 1-516-512-3133

 Email: info@creative-biomart.com  Fax: 1-631-938-8127

 45-1 Ramsey Road, Shirley, NY 11967, USA



(Tris-Glycine gel) Discontinuous SDS-PAGE (reduced) with 5% enrichment gel and 15% separation gel.

 Tel: 1-631-559-9269 1-516-512-3133

 Email: info@creative-biomart.com  Fax: 1-631-938-8127

 45-1 Ramsey Road, Shirley, NY 11967, USA