

Recombinant Human serum amyloid A1 Protein, Flag tagged

Cat. No. SAA1-257H Lot. No. (See product label)

SPECIFICATION

Product Overview	Recombinant human SAA1 protein (P0DJ18) (Arg 19-Tyr 122) with a Flag tag at the C-terminus was expressed HEK293.
Species	Human
Source	HEK293
ProteinLength	19-122aa
Description	Serum amyloid A1 (SAA1) is a protein that in humans is encoded by the SAA1 gene. SAA1 is a major acute-phase protein mainly produced by hepatocytes in response to infection, tissue injury and malignancy. When released into blood circulation, SAA1 is present as an apolipoprotein associated with high-density lipoprotein (HDL). SAA1 is a major precursor of amyloid A (AA), the deposit of which leads to inflammatory amyloidosis.
Tag	C-Flag
Molecular Mass	13.3 kDa
Endotoxin	Less than 1.0 EU/μg by the LAL method.
Purity	>95% as determined by SDS-PAGE.
Storage	Please avoid repeated freeze-thaw cycles. Samples are stable for up to twelve

 Tel: 1-631-559-9269 1-516-512-3133

 Email: info@creative-biomart.com  Fax: 1-631-938-8127

 45-1 Ramsey Road, Shirley, NY 11967, USA

months from date of receipt at -20 to -80 centigrade. It is recommended that aliquot the reconstituted solution to minimize freeze-thaw cycles.

Storage Buffer

Lyophilized from a 0.2 µm filtered solution of PBS, pH7.4, 5% Trehalose, 5% mannitol.

Reconstitution

Reconstitute at 250 µg/mL in sterile water.

GENE INFORMATION

Gene Name

SAA1 serum amyloid A1 [Homo sapiens (human)]

Official Symbol

SAA1

Synonyms

SAA1; serum amyloid A1; SAA; serum amyloid A protein; PIG4; TP53I4; tumor protein p53 inducible protein 4; SAA2; MGC111216;

Gene ID

6288

mRNA Refseq

NM_000331

Protein Refseq

NP_000322

MIM

104750

UniProt ID

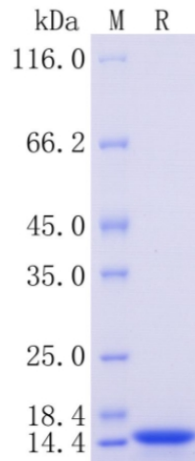
P0DJ18

 Tel: 1-631-559-9269 1-516-512-3133

 Email: info@creative-biomart.com  Fax: 1-631-938-8127

 45-1 Ramsey Road, Shirley, NY 11967, USA

**Protein on SDS-
PAGE under
reducing (R)
condition.**



 Tel: 1-631-559-9269 1-516-512-3133

 Email: info@creative-biomart.com  Fax: 1-631-938-8127

 45-1 Ramsey Road, Shirley, NY 11967, USA