

Active Recombinant Human SAA1 protein

Cat. No. SAA1-2668H **Lot. No.** (See product label)

SPECIFICATION

Product Overview	Recombinant Human SAA1 protein was expressed in Escherichia coli.
Species	Human
Source	E.coli
ProteinLength	19-122 a.a.
Description	Serum amyloid A protein which belongs to the SAA family is encoded by the SAA gene in humans. It is expressed by the liver and secreted in plasma. Serum amyloid A is the major acute phase reactant and apolipoprotein of the HDL complex. Elevated serum SAA protein levels may be associated with lung cancer. The level of Apo-SAA, normally 1-5 µg/ml in plasma, increases 500-1000 fold within 24 hours of an inflammatory stimulus and, under these conditions, is the most abundant HDL Apo-lipoprotein. Recombinant human Apo-SAA1 is an 11.7 kDa protein containing 104 amino acid residues.
Form	Lyophilized from a 0.2µm filtered concentrated solution in 20 mM Tris-HCl, pH 9.0, 150 mM NaCl.
Bio-activity	Fully biologically active when compared to standard. The biological activity determined by a chemoattract bioassay using human monocytes is in a concentration range of 10-100 ng/ml.
Molecular Mass	Approximately 11.7 kDa, a single non-glycosylated polypeptide chain containing 104

 Tel: 1-631-559-9269 1-516-512-3133

 Email: info@creative-biomart.com  Fax: 1-631-938-8127

 45-1 Ramsey Road, Shirley, NY 11967, USA

	amino acids.
AA Sequence	RSFFSFLGAEAFDGARDMWRAYSDMREANYIGSDKYFHARGNYDAAKRGPGGVWA AEAISDARENIQRFFFGHGAEDSLADQAANEWGRSGKDPNHFRPAGLPEKY
Purity	>98% by SDS-PAGE and HPLC analysis.
Storage	Use a manual defrost freezer and avoid repeated freeze-thaw cycles. 12 months from date of receipt, -20 to -70 centigrade as supplied. 1 month, 2 to 8 centigrade under sterile conditions after reconstitution. 3 months, -20 to -70 centigrade under sterile conditions after reconstitution.
Reconstitution	We recommend that this vial be briefly centrifuged prior to opening to bring the contents to the bottom. Reconstitute in sterile distilled water or aqueous buffer containing 0.1 % BSA to a concentration of 0.1-1.0 mg/mL. Stock solutions should be apportioned into working aliquots and stored at ≤-20 centigrade. Further dilutions should be made in appropriate buffered solutions.

GENE INFORMATION

Gene Name	SAA1
Official Symbol	SAA1
Synonyms	SAA1; serum amyloid A1; SAA; serum amyloid A protein; PIG4; TP53I4; tumor protein p53 inducible protein 4; SAA2; MGC111216;
Gene ID	6288
mRNA Refseq	NM_000331

 Tel: 1-631-559-9269 1-516-512-3133

 Email: info@creative-biomart.com  Fax: 1-631-938-8127

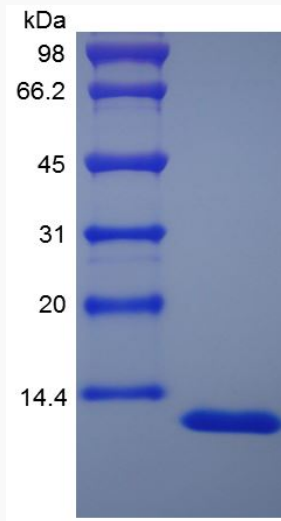
 45-1 Ramsey Road, Shirley, NY 11967, USA

Protein Refseq NP_000322

MIM 104750

UniProt ID P0DJ18

SDS-PAGE of SAA1-2668H



 Tel: 1-631-559-9269 1-516-512-3133

 Email: info@creative-biomart.com  Fax: 1-631-938-8127

 45-1 Ramsey Road, Shirley, NY 11967, USA