

Recombinant Rhesus SAA1 protein

Cat. No. SAA1-5197R **Lot. No.** (See product label)

SPECIFICATION

Product Overview	Recombinant Rhesus SAA1 protein was expressed in Escherichia coli.
Species	Rhesus macaque
Source	E.coli
ProteinLength	104
Description	Serum Amyloid A protein-1 belongs to the SAA family of apolipoproteins that circulates in association with high-density lipoproteins (HDL). It is a multifunctional protein produced by hepatocytes in response to pro-inflammatory cytokines. SAA1 is a ligand for CD36/SR-B3, SR-B1, FPRL1, TLR2, and RAGE on monocytes/macrophages, inducing chemotaxis and generation of cytokines and tissue factor. It also can bind the surface of invading gram-negative bacteria, acting as an opsonin to aid clearance by macrophages. Additionally, SAA1 binds platelets, probably by engaging fibrinogen on the platelet surface.
Form	Lyophilized from a 0.2µm filtered concentrated solution in PBS, pH 7.4.
Bio-activity	Fully biologically active when compared to standard. The biological activity determined by a chemotaxis bioassay using human monocytes is in a concentration range of 10-100 ng/ml.
Molecular Mass	Approximately 11.7 kDa, a single non-glycosylated polypeptide chain containing 104 amino acids.

 Tel: 1-631-559-9269 1-516-512-3133

 Email: info@creative-biomart.com  Fax: 1-631-938-8127

 45-1 Ramsey Road, Shirley, NY 11967, USA

AA Sequence	RSWFSFLGEAYDGARDMWRAYSDMKEANYKNSDKYFHARGNYDAAQRGPGGVW AAEVIDDARENIQKLLGRGAEDTLADQAANEWGRSGKDPNHFRPAGLPEKY
Endotoxin	Less than 1 EU/μg of rRhSAA1 as determined by LAL method.
Purity	>97% by SDS-PAGE and HPLC analysis.
Storage	Use a manual defrost freezer and avoid repeated freeze-thaw cycles. 12 months from date of receipt, -20 to -70 centigrade as supplied. 1 month, 2 to 8 centigrade under sterile conditions after reconstitution. 3 months, -20 to -70 centigrade under sterile conditions after reconstitution.
Reconstitution	We recommend that this vial be briefly centrifuged prior to opening to bring the contents to the bottom. Reconstitute in sterile distilled water or aqueous buffer containing 0.1 % BSA to a concentration of 0.1-1.0 mg/mL. Stock solutions should be apportioned into working aliquots and stored at ≤-20 centigrade. Further dilutions should be made in appropriate buffered solutions.

GENE INFORMATION

Gene Name	SAA1
Official Symbol	SAA1
Synonyms	Amyloid fibril protein AA
Gene ID	694827
mRNA Refseq	XM_015114692.2
Protein Refseq	XP_014970178.2

 Tel: 1-631-559-9269 1-516-512-3133

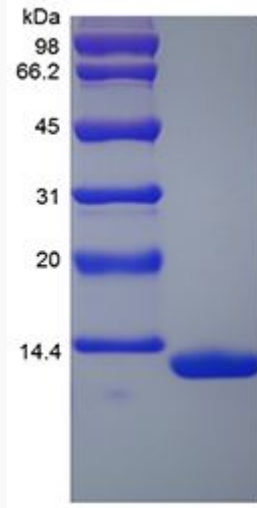
 Email: info@creative-biomart.com  Fax: 1-631-938-8127

 45-1 Ramsey Road, Shirley, NY 11967, USA

UniProt ID

F6V9N7

SDS-PAGE of SAA1-5197R



 Tel: 1-631-559-9269 1-516-512-3133

 Email: info@creative-biomart.com  Fax: 1-631-938-8127

 45-1 Ramsey Road, Shirley, NY 11967, USA