

Recombinant Human SACM1L Protein, Myc/DDK-tagged, C13 and N15-labeled

Cat. No. SACM1L-2686H **Lot. No.** (See product label)

SPECIFICATION

Product Overview	SACM1L MS Standard C13 and N15-labeled recombinant protein (NP_054735) with a C-terminal MYC/DDK tag, was expressed in HEK293 cells.
Species	Human
Source	HEK293
Description	This gene encodes an integral membrane protein, which is localized to the endoplasmic reticulum, and functions as a phosphoinositide phosphatase that hydrolyzes phosphatidylinositol 3-phosphate, phosphatidylinositol 4-phosphate, and phosphatidylinositol 3,5-bisphosphate. Deletion of this gene in mouse results in preimplantation lethality. Other studies suggest that this gene is also involved in the organization of golgi membranes and mitotic spindles. Alternatively spliced transcript variants have been found for this gene. A C-terminally extended isoform is also predicted to be produced by the use of an alternative in-frame, downstream translation termination codon via a stop codon readthrough mechanism.
Molecular Mass	66.8 kDa
AA Sequence	MATAAYEQLKLHITPEKFYVEACDDGADDVLTIDRVSTEVTLAVKKDVPPSAVTRPIF GILGTIHLVAGNYLIVITKKIKVGEFFSHVVKATDFDVLSYKKTMLHLTDIQLQDNKTF LAMLNHVLNVDGFYFSTTYDLTHTLQRLSNTSPEFQEMSLLERADQRFVWNGHLLR ELSAQPEVHRFALPVLHGFITMHSCSINGKYFDWILISRRSCFRAGVRYVYVRGIDSEG

 Tel: 1-631-559-9269 1-516-512-3133

 Email: info@creative-biomart.com  Fax: 1-631-938-8127

 45-1 Ramsey Road, Shirley, NY 11967, USA

HAANFVETEQIVHYNGSKASFVQTRGSIPVFWWSQRPNLKYKPLPQISKVANHMDGF
 QRHFDSQVIYQKQVIINLINQKGSEKPLEQTFATMVSSLGSGMMRYIAFDFHKECKN
 MRWDRLSILLDQVAEMQDELSYFLVDSAGQVVANQEGVFRSNCMDCLDRTNVIQSL
 LARRSLQAQLQRLGVLHVGQKLEEQDEFEKIFKNAWADNANACAKQYAGTGALKTD
 FTTRTGKRTHLGLIMDGWNSMIRYYKNNFSDGFRQDSIDLFLGNYSVDELESHSPLSV
 PRDWKFLALPIIMVVAFSMCIICLLMAGDTWTETLAYVLFWGWASIGTFFIILYNGKDF
 VDAPRLVQKEKIDTRTRPLEQKLISEEDLAANDILDYKDDDDKV

Purity > 80% as determined by SDS-PAGE and Coomassie blue staining

Stability Stable for 3 months from receipt of products under proper storage and handling conditions.

Storage Store at -80 centigrade. Avoid repeated freeze-thaw cycles.

Concentration 50 µg/mL as determined by BCA

Storage Buffer 100 mM glycine, 25 mM Tris-HCl, pH 7.3.

GENE INFORMATION

Gene Name SACM1L SAC1 like phosphatidylinositide phosphatase [Homo sapiens (human)]

Official Symbol SACM1L

Synonyms SACM1L; SAC1 suppressor of actin mutations 1-like (yeast); phosphatidylinositide phosphatase SAC1; KIAA0851; SAC1; suppressor of actin 1; suppressor of actin mutations 1-like protein; DKFZp686A0231;

Gene ID 22908

 Tel: 1-631-559-9269 1-516-512-3133

 Email: info@creative-biomart.com  Fax: 1-631-938-8127

 45-1 Ramsey Road, Shirley, NY 11967, USA

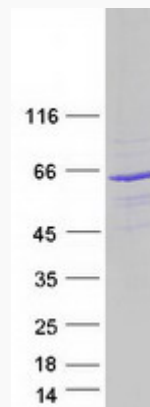
mRNA Refseq [NM_014016](#)

Protein Refseq [NP_054735](#)

MIM [606569](#)

UniProt ID [Q9NTJ5](#)

SDS-PAGE



 Tel: 1-631-559-9269 1-516-512-3133

 Email: info@creative-biomart.com  Fax: 1-631-938-8127

 45-1 Ramsey Road, Shirley, NY 11967, USA